

A-FOLD houses STRATIGRAPHY

INDEX

RESIDENTIAL STRUCTURES

- Foldable roof;
 - Vertical walls;
 - Foldable walls;
 - Base ground slab;
 - First slab;
 - Facade
-

TOURISTIC FACILITIES

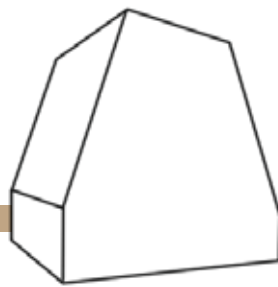
- Foldable roof;
- Vertical walls;
- Foldable walls;
- Base ground slab;
- First slab;
- Facade

RESIDENTIAL STRUCTURES

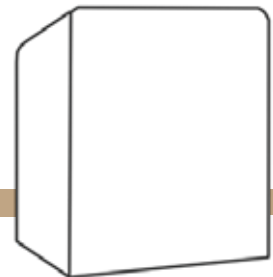
A-FOLD houses



MODEL A



MODEL T

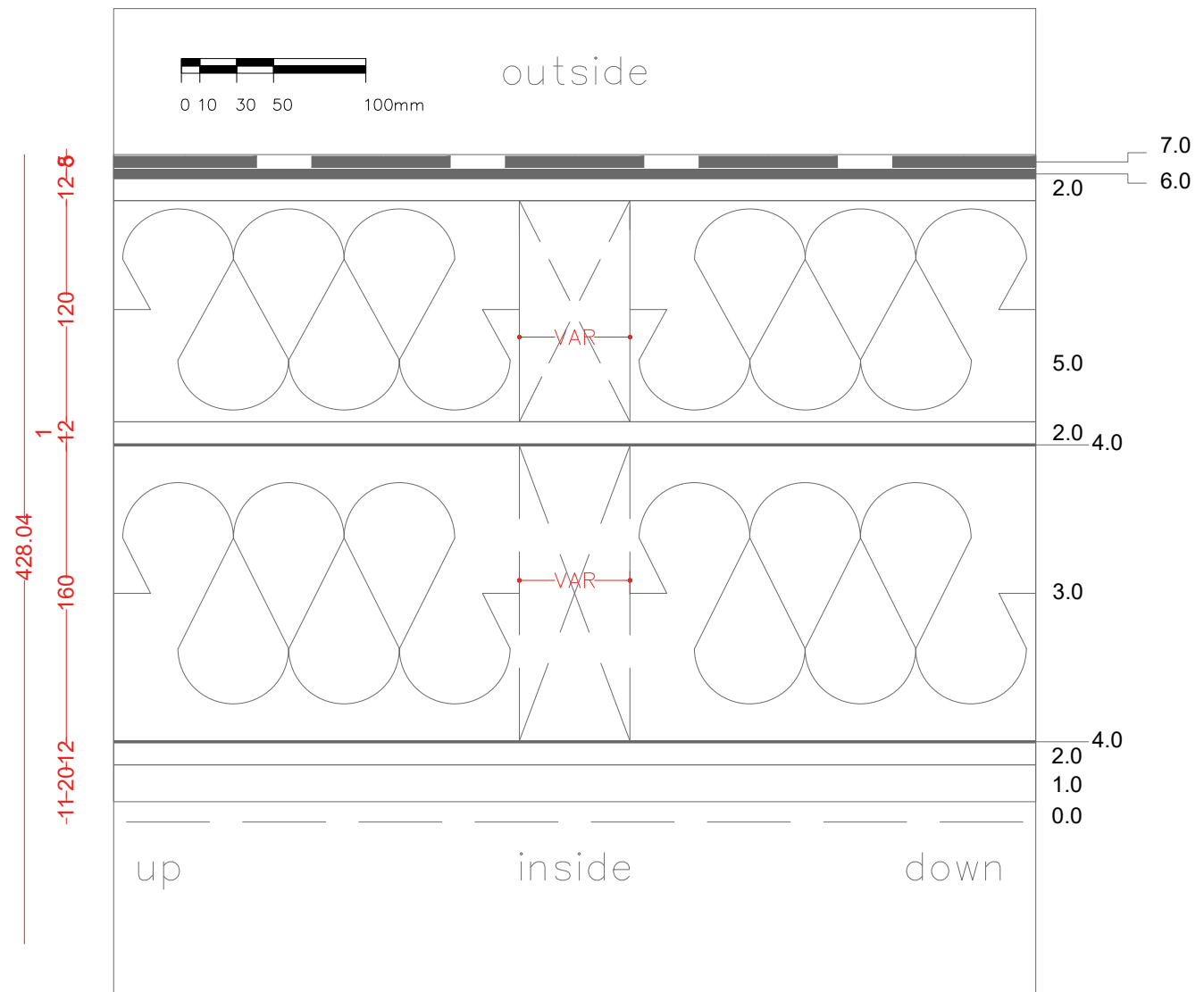


MODEL C

FOLDABLE ROOF (MODEL T & C)

SPECIFICS:

- 0.0 - GAP (functional void)
- 1.0 - WOODEN PLANKS (n.b.-indicated thickness to be intended as a maximum)
- 2.0 - INTERIOR CLADDING min:9 mm - max:16 mm
- 2.1 - STRUCTURAL PANEL (i.e. OSB, CHIPBOARD or similar)
- 3.0 - TIMBER STRUCTURE + INSULATION (i.e. ROCKWOOL or similar)
- 4.0 - PVC VAPOUR BARRIER SHEET
- 5.0 - TIMBER SLATS + INSULATION (i.e. ROCKWOOL or similar)
- 6.0 - BITUMEN WATERPROOF MEMBRANE
- 7.0 - BITUMEN TILES or METAL COATING



VERTICAL WALLS

SPECIFICS:

0.0 - TECHNICAL SPACE

1.0 - WOODEN PLANKS (n.b. - indicated thickness to be intended as a maximum)

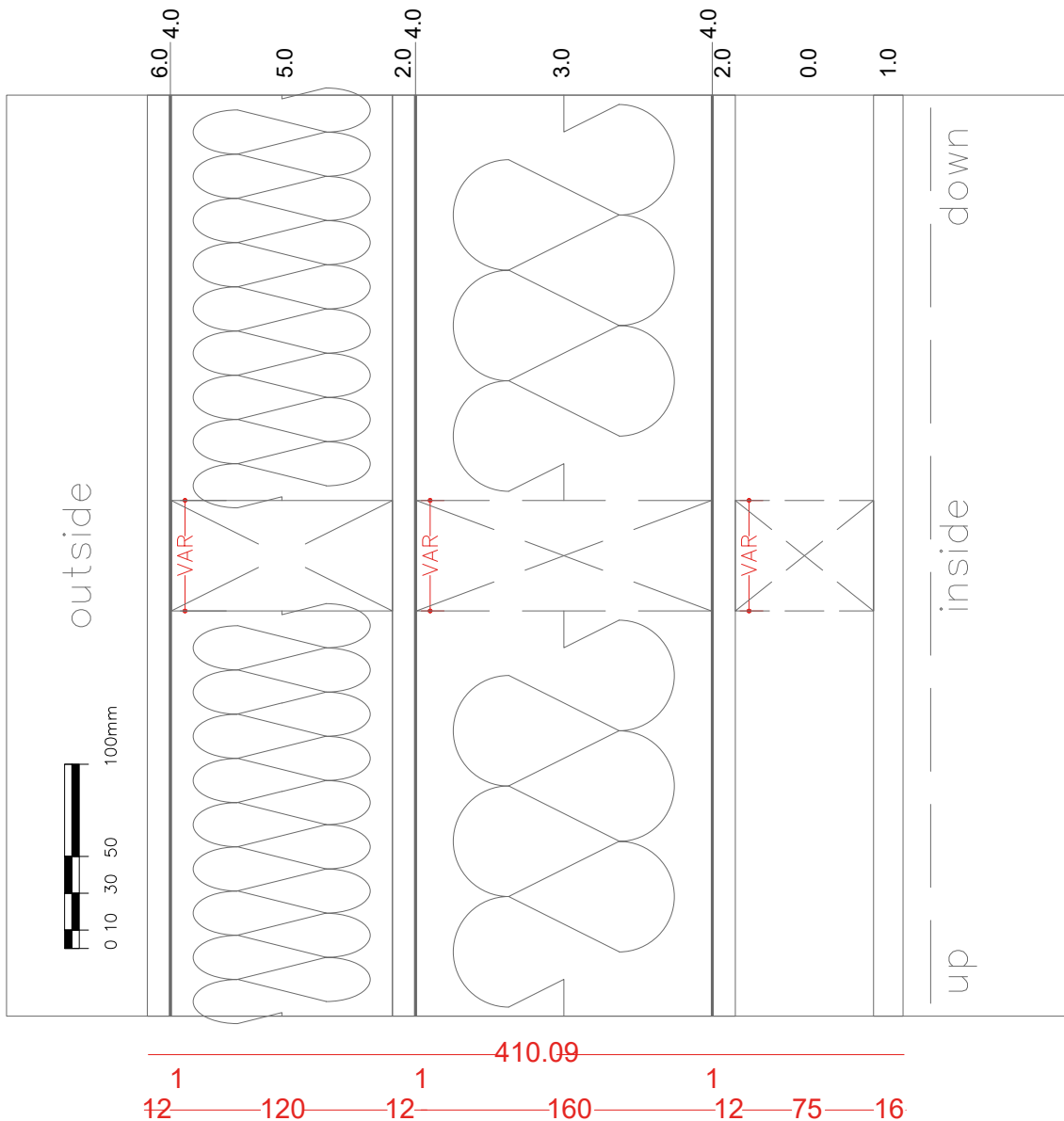
2.1 - STRUCTURAL PANEL (i.e. OSB, CHIPBOARD or similar)

3.0 - TIMBER STRUCTURE + INSULATION (i.e. ROCKWOOL or similar)

4.0 - PVC VAPOUR BARRIER SHEET

5.0 - TIMBER SLATS + INSULATION (i.e. ROCKWOOL or similar)

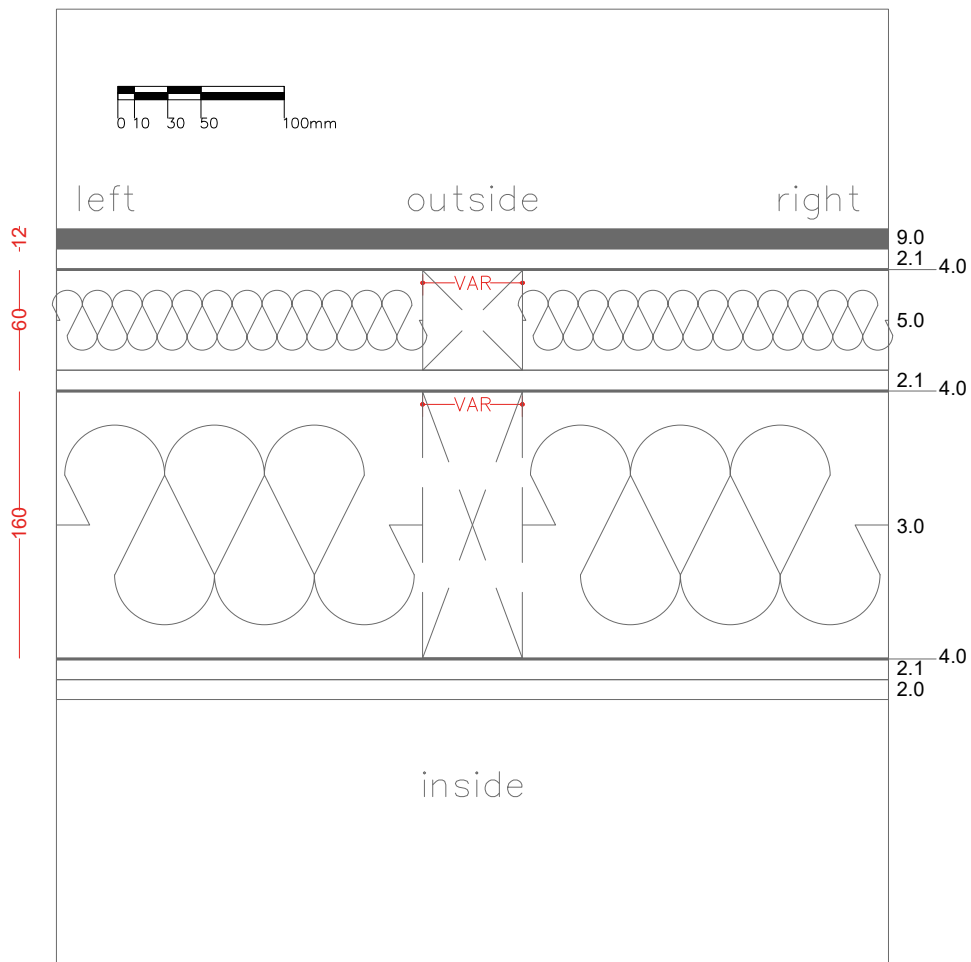
9.0 - EXTERIOR CLADDING min: 12 mm - max: 5 cm



FOLDABLE WALLS

SPECIFICS:

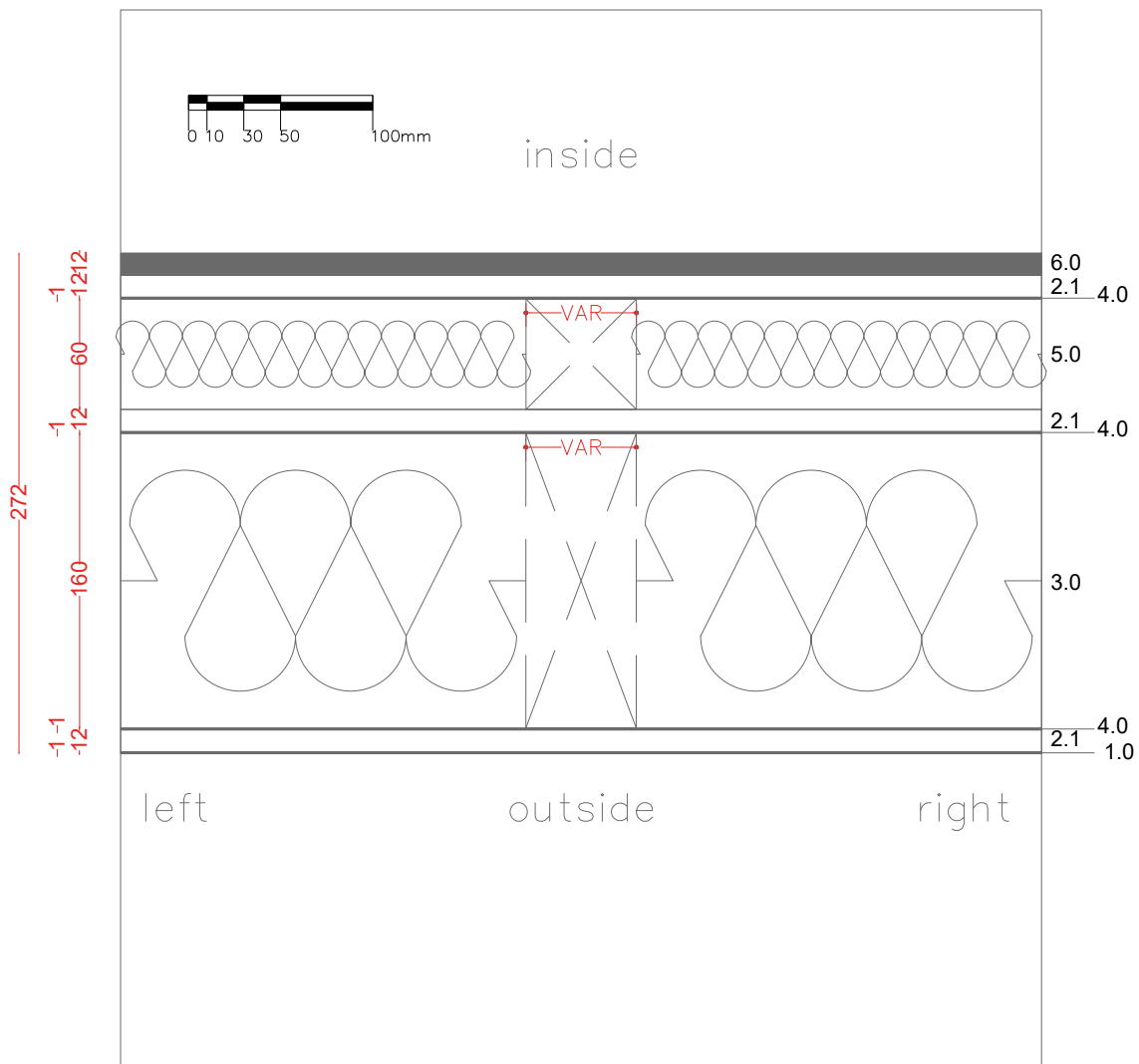
- 2.0 - INTERIOR CLADDING min: 9 mm - max: 16 mm
- 2.1 - STRUCTURAL PANEL (i.e. OSB; CHIPBOARD or similar)
- 3.0 - TIMBER STRUCTURE + INSULATION (i.e. ROCKWOOL or similar)
- 4.0 - PVC VAPOUR BARRIER SHEET
- 5.0 - TIMBER SLATS + INSULATION (i.e. ROCKWOOL or similar)
- 9.0 - EXTERIOR CLADDING min: 12 mm - max: 5 cm



BASE GROUND SLAB

SPECIFICS:

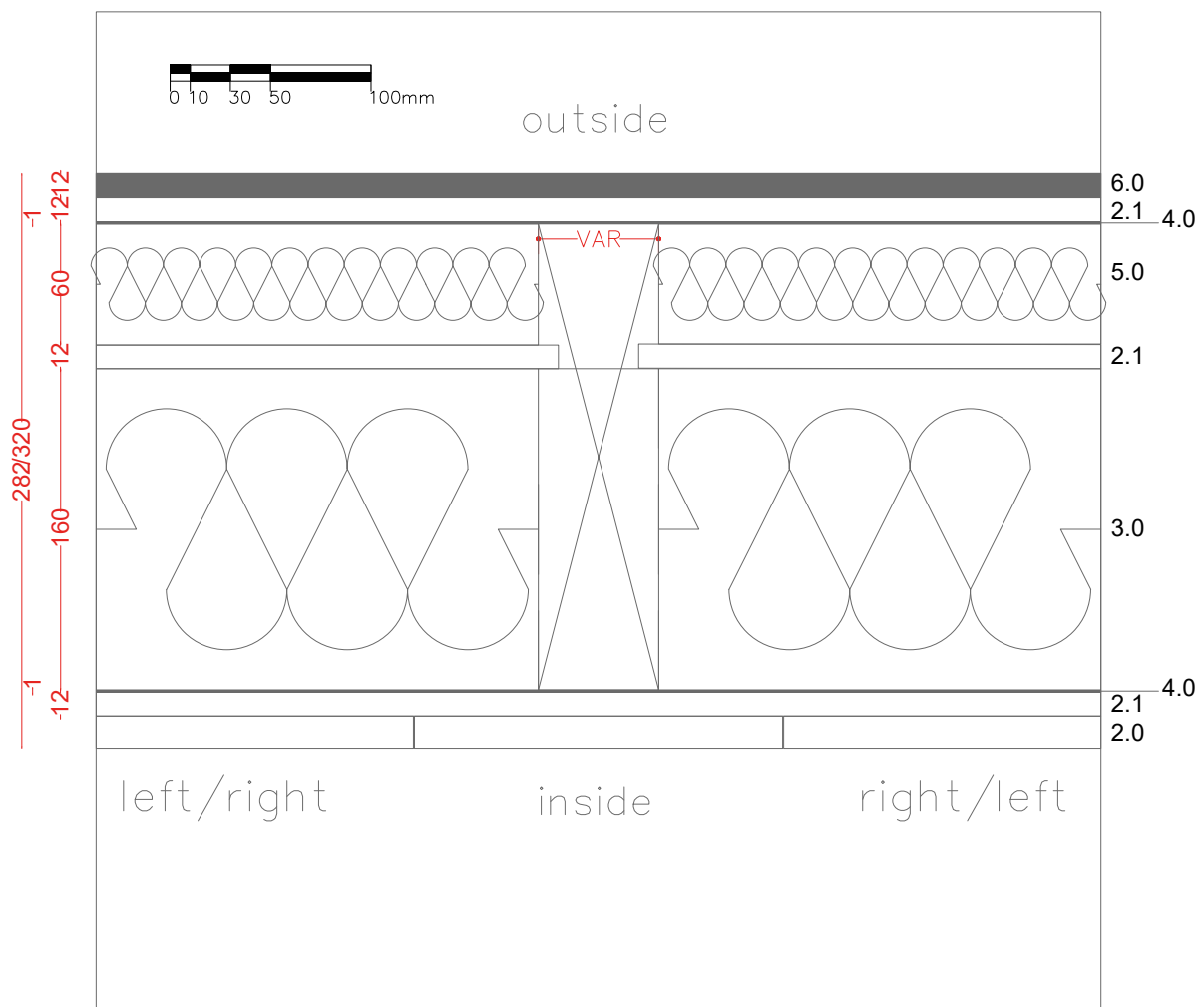
- 1.0 - LIQUID FIBREGLASS SHEATHING
- 2.1 - STRUCTURAL PANEL (i.e. OSB, CHIPBOARD or similar)
- 3.0 - TIMBER STRUCTURE + INSULATION (i.e. ROCKWOOL or similar)
- 4.0 - PVC VAPOUR BARRIER SHEET
- 5.0 - TIMBER SLATS + INSULATION (i.e. ROCKWOOL or similar)
- 6.0 - FLOOR (n.b. - indicated thickness to be intended as a maximum)



FIRST SLAB

SPECIFICS:

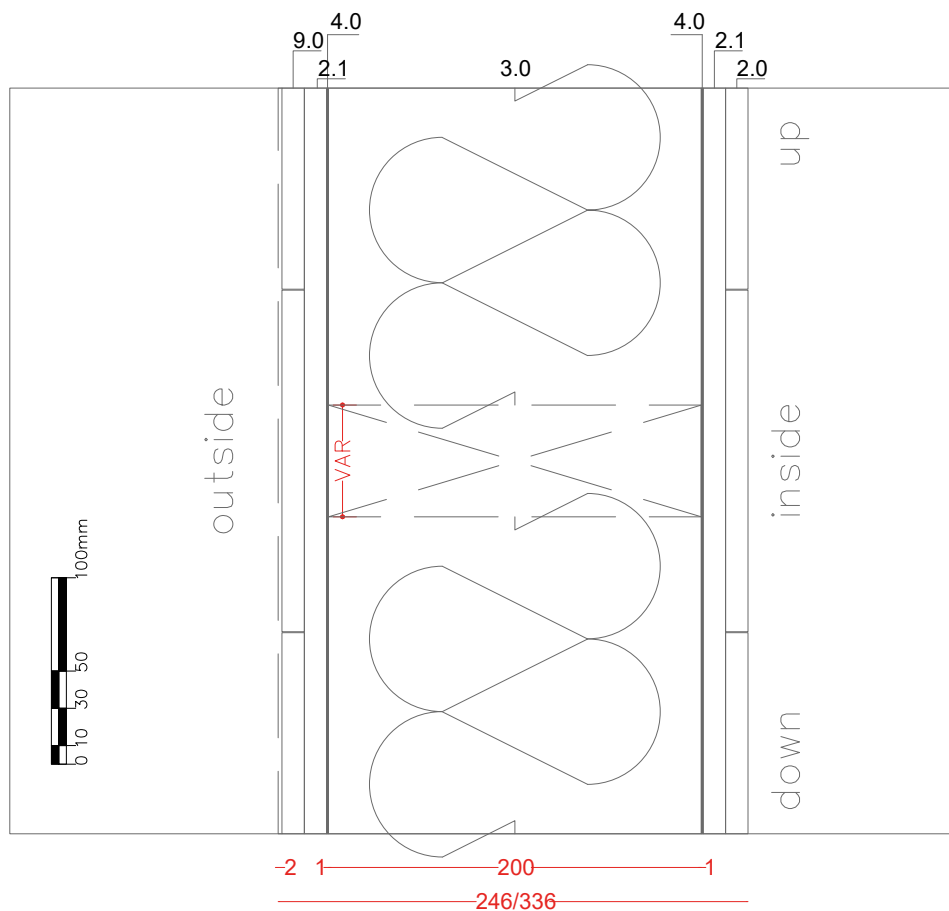
- 2.0 - INTERIOR CLADDING min: 9 mm - max: 16 mm
- 2.1 - STRUCTURAL PANEL (i.e. OSB, CHIPBOARD or similar)
- 3.0 - TIMBER STRUCTURE + INSULATION (i.e. ROCKWOOL or similar)
- 4.0 - PVC VAPOUR BARRIER SHEET
- 5.0 - TIMBER SLATS + INSULATION (i.e. ROCKWOOL or similar)
- 6.0 - FLOOR (n.b. - indicated thickness to be intended as a maximum)



FACADE

SPECIFICS:

- 2.0 - INTERIOR CLADDING min: 9 mm - max: 16 mm
- 2.1 - STRUCTURAL PANEL (i.e. OSB, CHIPBOARD or similar)
- 3.0 - TIMBER STRUCTURE + INSULATION (i.e. ROCKWOOL or similar)
- 4.0 - PVC VAPOUR BARRIER SHEET
- 0.1 - GAP - (functional void)
- 9.0 - EXTERIOR CLADDING min: 12 mm - max: 5 cm



A·FOLD
h o u s e s
www.a-fold.com