

# **A-FOLD houses** STRATIGRAPHY

# INDEX

## RESIDENTIAL STRUCTURES

- Foldable roof;
  - Vertical walls;
  - Foldable walls;
  - Base ground slab;
  - First slab;
  - Facade
- 

## TOURISTIC FACILITIES

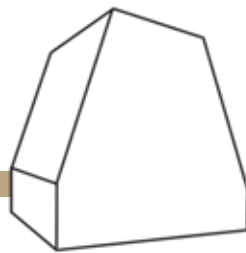
- Foldable roof;
- Vertical walls;
- Foldable walls;
- Base ground slab;
- First slab;
- Facade

# TOURISTIC FACILITIES

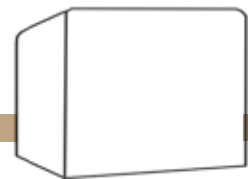
## A-FOLD glamping



MODEL A



MODEL T

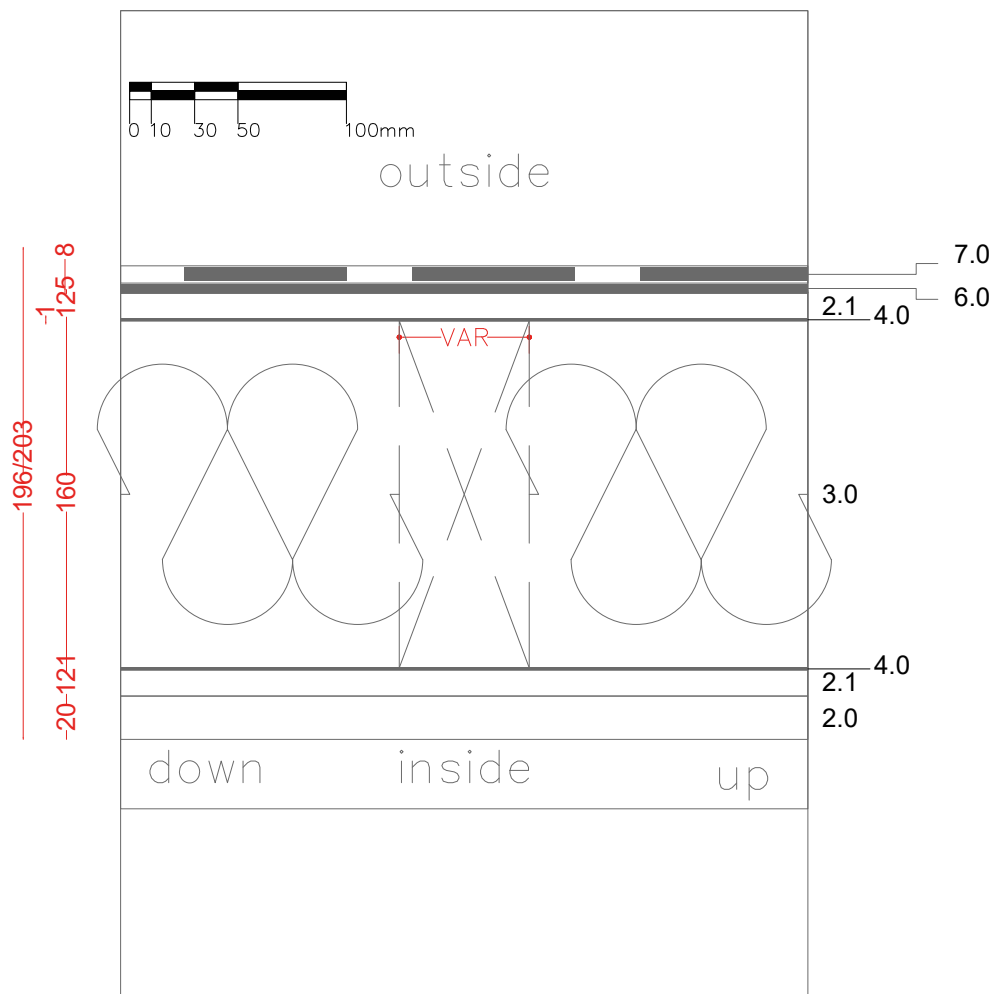


MODEL C

# FOLDABLE ROOF

## SPECIFICS:

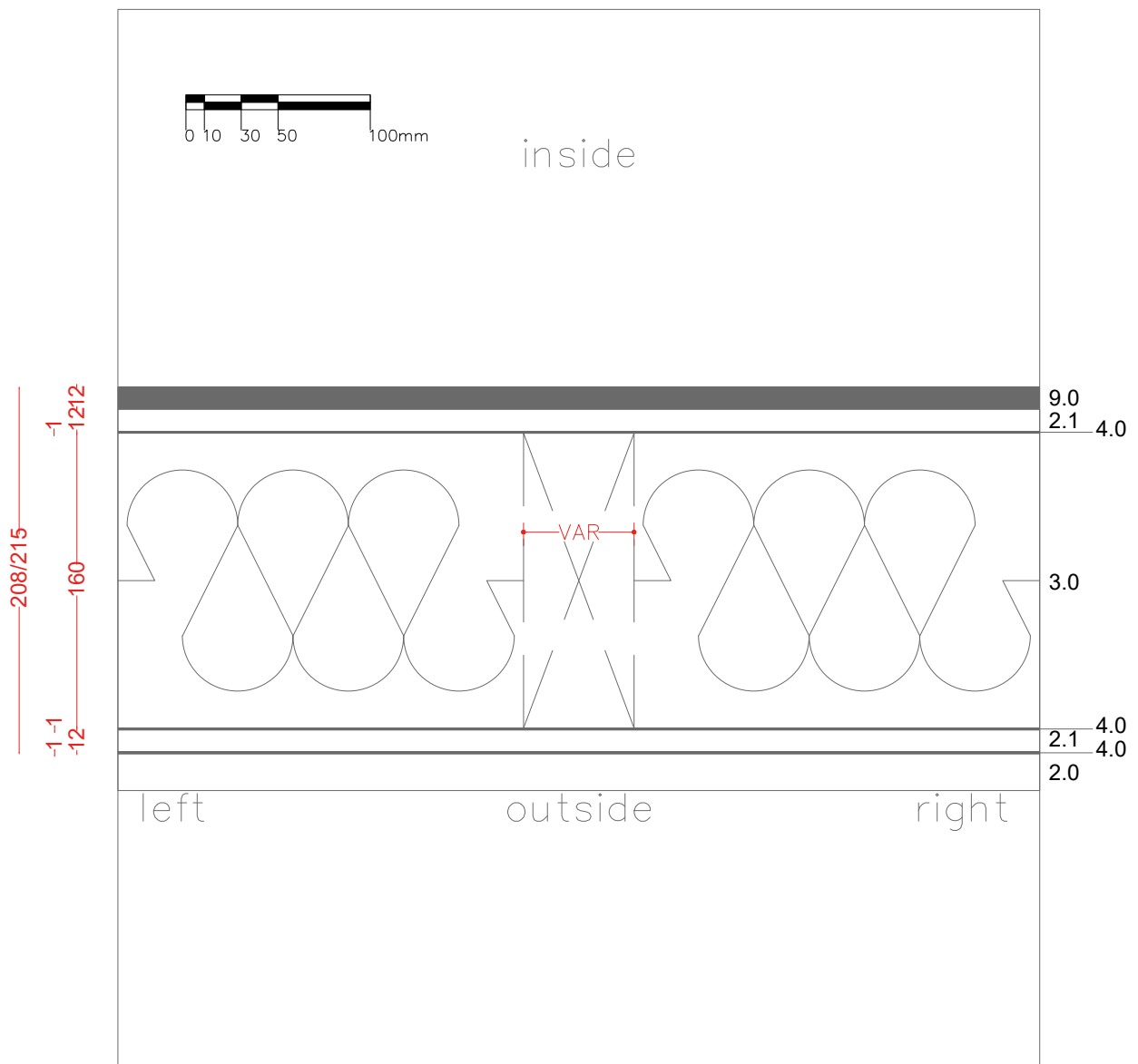
- 2.0 - INTERIOR CLADDING min: 9 mm - max: 16 mm
- 2.1 - STRUCTURAL PANEL (i.e. OSB; CHIPBOARD or similar)
- 3.0 - TIMBER STRUCTURE + INSULATION (i.e. ROCKWOOL or similar)
- 4.0 - PVC VAPOUR BARRIER SHEET
- 6.0 - BITUMEN WATERPROOF MEMBRANE
- 7.0 - BITUMEN TILES OR METAL COATING



# FOLDABLE WALLS

## SPECIFICS:

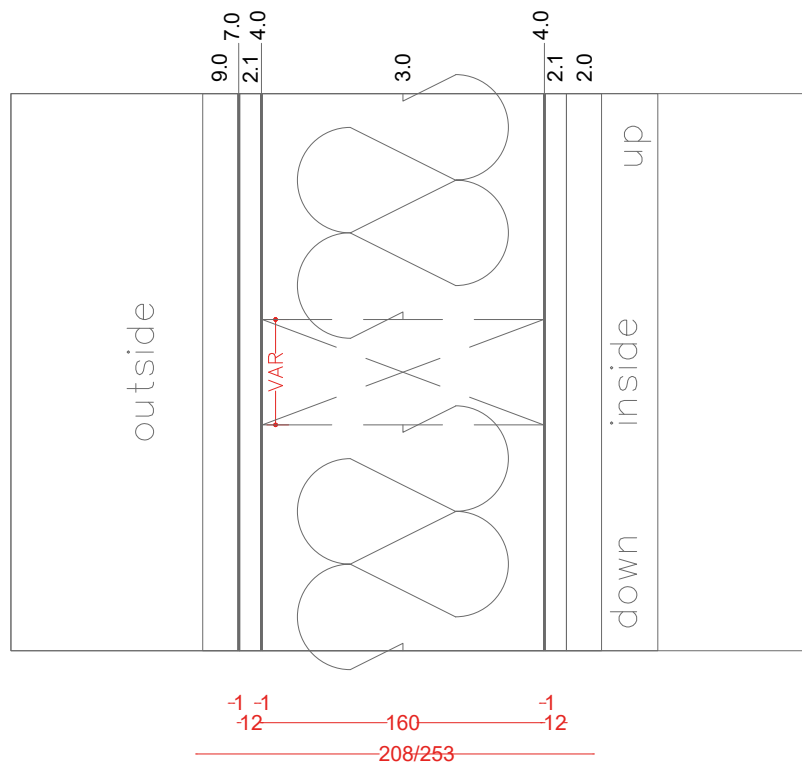
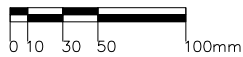
- 2.0 - INTERIOR CLADDING min: 9 mm - max: 16 mm
- 2.1 - STRUCTURAL PANEL (i.e. OSB; CHIPBOARD or similar)
- 3.0 - TIMBER STRUCTURE + INSULATION (i.e. ROCKWOOL or similar)
- 4.0 - PVC VAPOUR BARRIER SHEET
- 9.0 - EXTERIOR CLADDING min: 12 mm - max: 5 cm



# VERTICAL WALLS

## SPECIFICS:

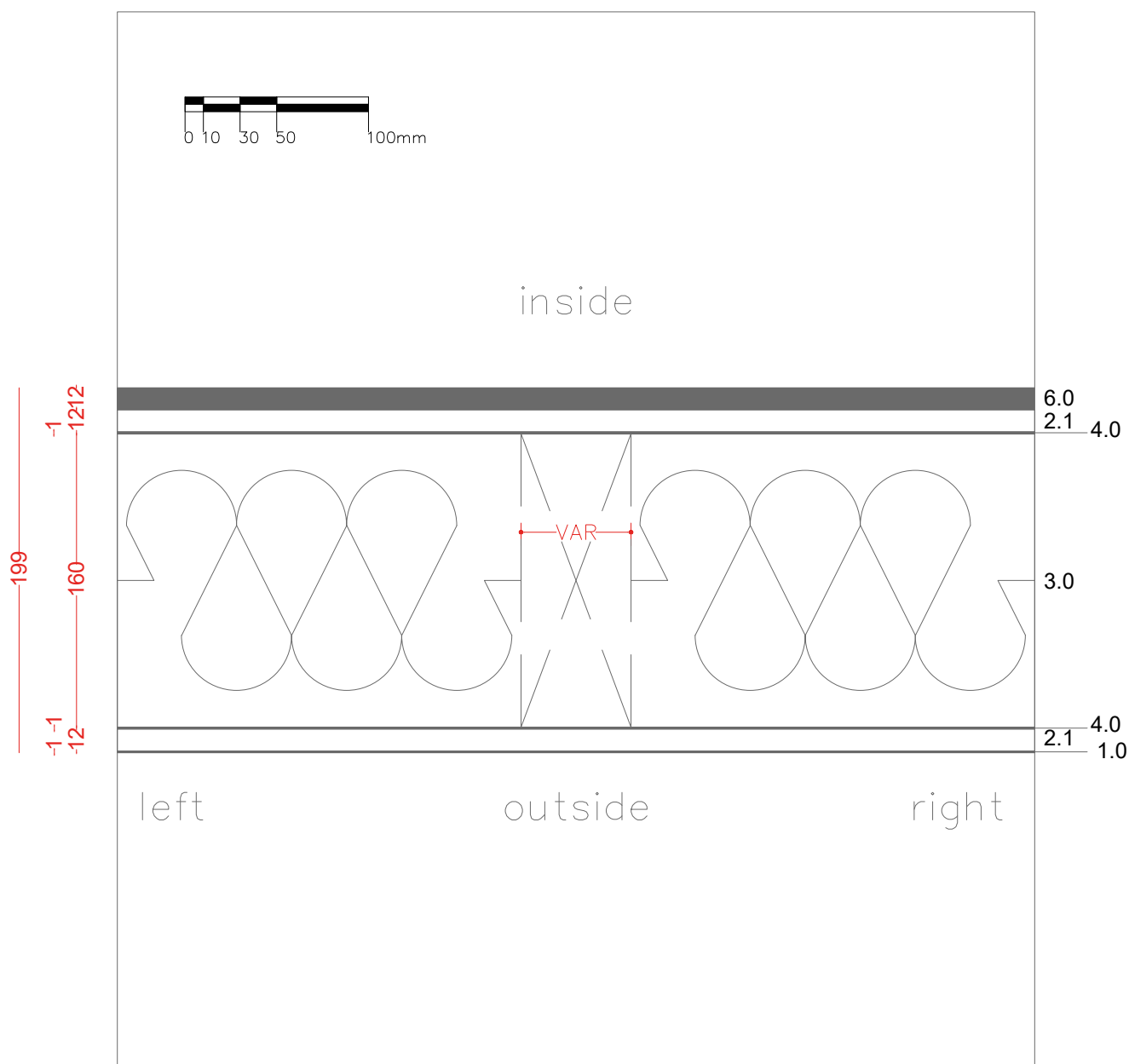
- 2.0 - INTERIOR CLADDING min: 9 mm max: 16 mm
- 2.1 - STRUCTURAL PANEL (i.e. OSB, CHIPBOARD or similar)
- 3.0 - TIMBER STRUCTURE + INSULATION (i.e. ROCKWOOL or similar)
- 4.0 - PVC VAPOUR BARRIER SHEET
- 7.0 - UV WINDPROOF SHEET
- 9.0 - EXTERIOR CLADDING min: 12 mm - max: 5 cm



# BASE GROUND SLAB

## SPECIFICS:

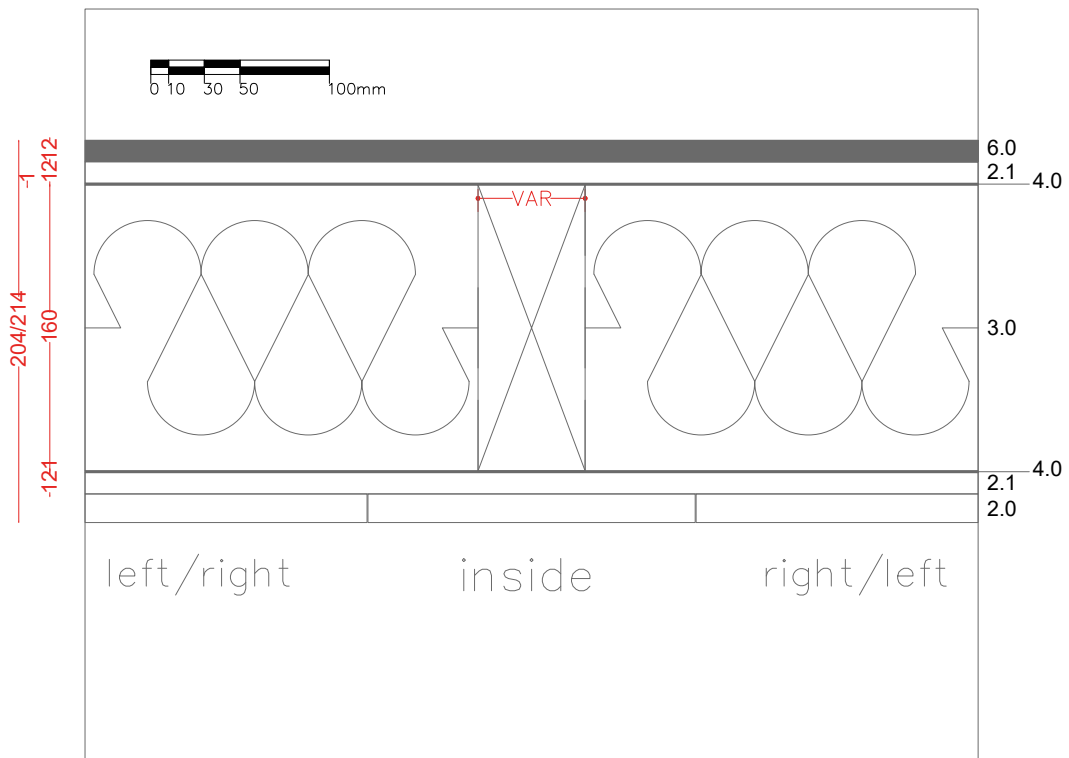
- 1.0 - LIQUID FIBREGLASS SHEATHING
- 2.1 - STRUCTURAL PANEL (i.e. ROCKWOOL or similar)
- 3.0 - TIMBER STRUCTURE + INSULATION (i.e. ROCKWOOL or similar)
- 4.0 - PVC VAPOUR BARRIER SHEET
- 6.0 - FLOOR (n.b. - indicated thickness to be intended as a maximum)



# FIRST SLAB

## SPECIFICS:

- 2.0 - INTERIOR CLADDING min: 9 mm - max: 16 mm
- 2.1 - STRUCTURAL PANEL (i.e. OSB, CHIPBOARD or similar)
- 3.0 - TIMBER STRUCTURE + INSULATION (i.e. ROCKWOOL or similar)
- 4.0 - PVC VAPOUR BARRIER SHEET
- 6.0 - FLOOR (n.b. - indicated thickness to be intended as a maximum)

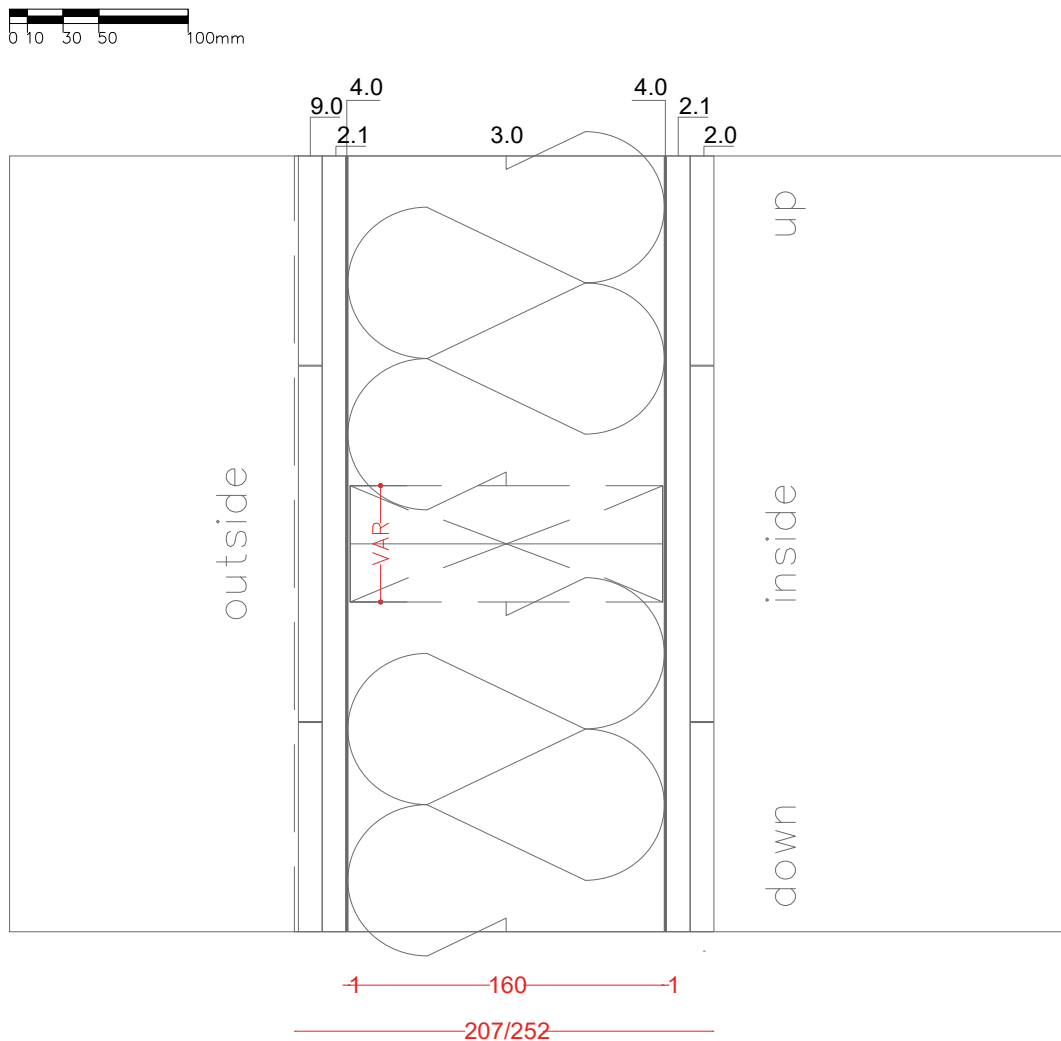




# FACADE

## SPECIFICS:

- 2.0 - INTERIOR CLADDING min: 9 mm - max: 16 mm
- 2.1 - STRUCTURAL PANEL (i.e. OSB, CHIPBOARD or similar)
- 3.0 - TIMBER STRUCTURE + INSULATION (i.e. ROCKWOOL or similar)
- 4.0 - PVC VAPOUR BARRIER SHEET
- 0.1 - GAP - (functional void)
- 9.0 - EXTERIOR CLADDING min: 12 mm - max: 5 cm



**A·FOLD**  
h o u s e s  
[www.a-fold.com](http://www.a-fold.com)