



**A-FOLD**  
h o u s e s

**THE MODULAR  
PREFABRICATED  
WOODEN HOUSE**

GENERAL CATALOGUE  
2022



# A-FOLD

h o u s e s

GENERAL CATALOGUE 2022

## ABOUT US

A-FOLD is a registered and patented brand. The A-FOLD houses are design and produced in Italy. Our team has a solid experience on prefabricated construction acquired in over 20 years of activity in projecting, manufacturing and developing various building solutions always with an eye to the green technology. Our challenge is to revolutionize the prefabricated affordable building industry through smart designs and innovative manufacturing processes.

Strength and passion of a dynamic environment with eyes fixed to a better future. The spirit of innovation originates from love for nature, because the only way doing business that we have known is to improve the environment in which men live, investing in the quality and style of the habitat, ensuring well-being and harmony. Our activity contributes to bio-architectural development through solid and advantageous answers, the result of a work made of commitment, intuition, seriousness, and above all passion.



## FEATURES & ADVANTAGES

A-FOLD uses ground-breaking building technology and innovative materials to build modern modular homes that unfold to provide, quickly and easily, an affordable, high-quality, sustainable living space. Durable and earthquake resistant, it's the perfect solution for any kind of purpose: residential, commercial, resorts and even disasters relief accommodations. We design safe and cosy spaces that can grow, move or change with your needs. Designed for an extremely comfortable living, A-FOLD guarantees an innovative and affordable housing solution.

A-FOLD perfectly fits wherever you want: large cities or rural areas, mountains or seaside villages, A-FOLD adapts perfectly to any environment. You can add your personal touch picking up the model that best suites you between a wide range of solutions and using your favorite materials according to your needs and your budget.



**HIGH ENERGY PERFORMANCE AND  
LOW ENVIRONMENTAL IMPACT**



**ACOUSTIC INSULATION**



**DURABILITY**



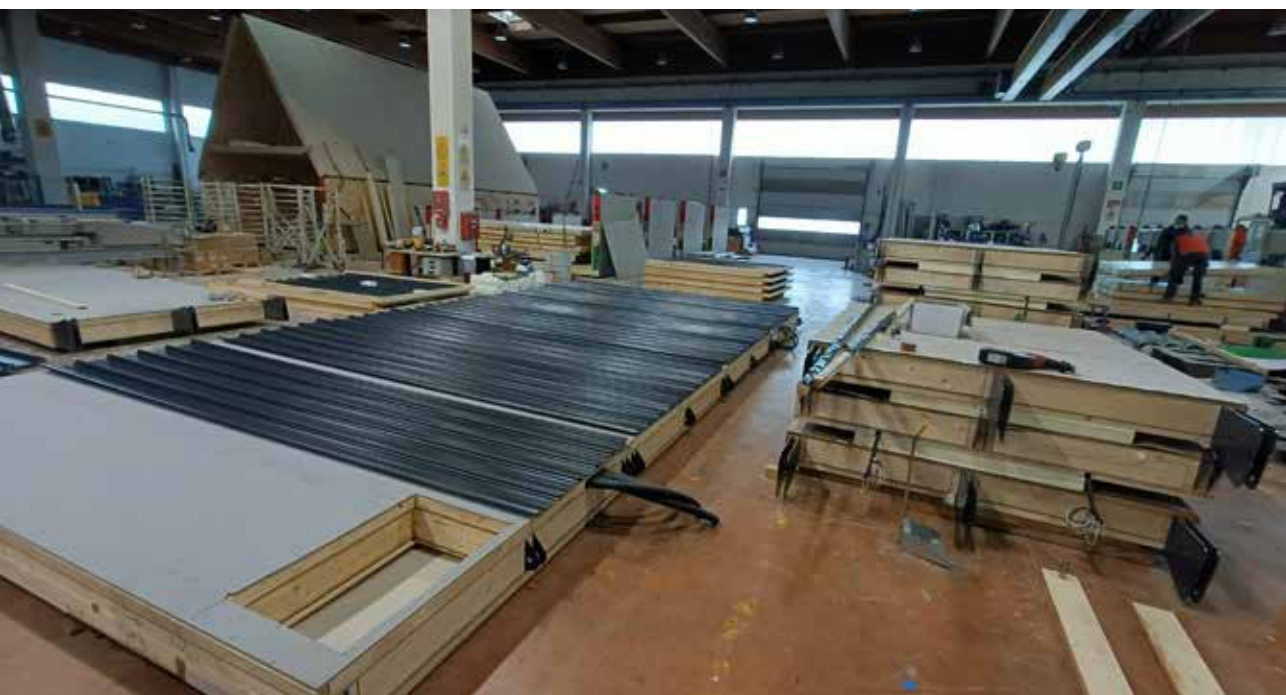
**100% ITALIAN DESIGN**



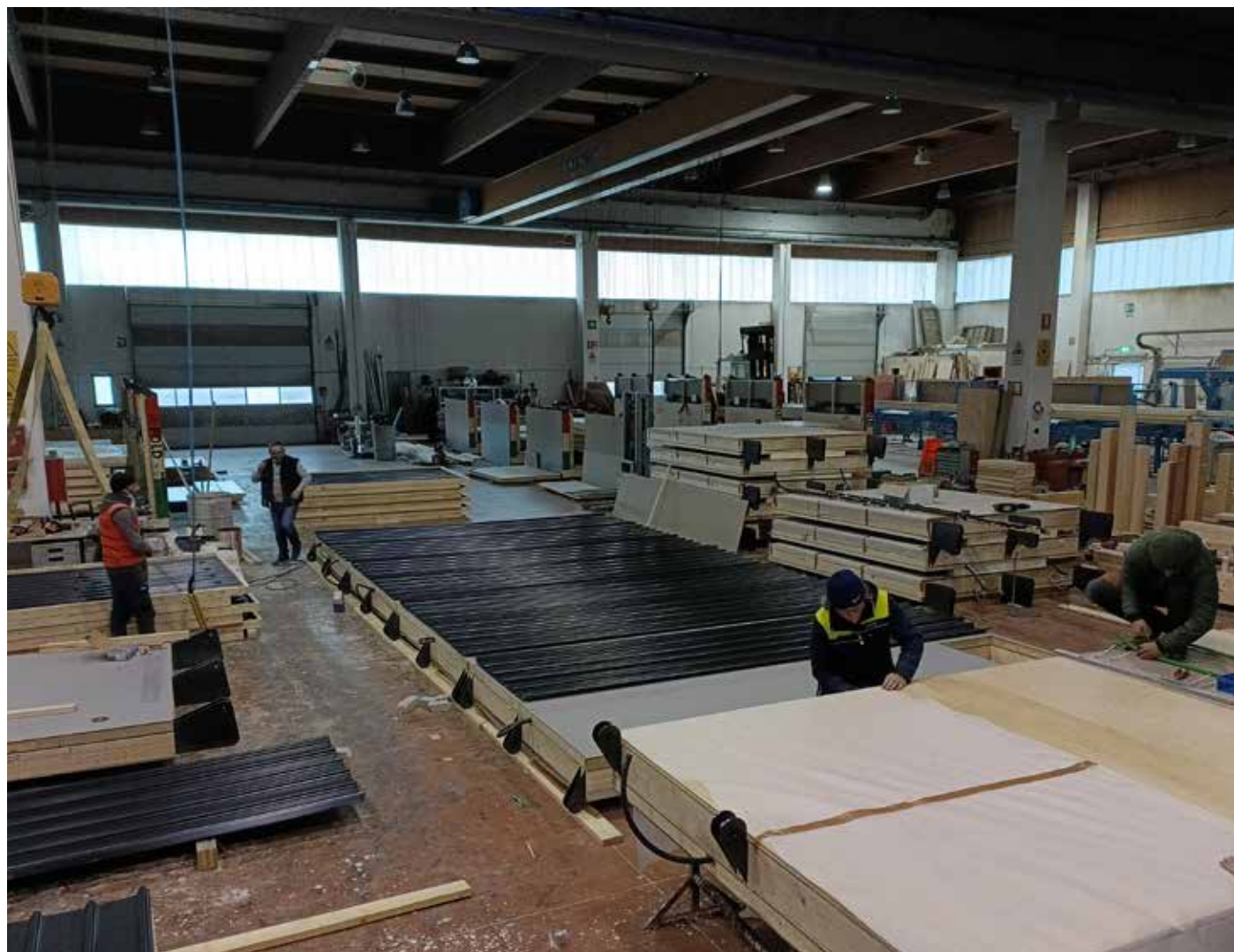
# PATENTED FOLDABLE SYSTEM

Thanks to our R&D and technical department we have reinvented the modular house with an innovative and patented foldable system. The modular system allows various settlement for maximum flexibility, it can be easily modified, extended and reorganized according to the customer needs.

Moreover, the innovative foldable system enables the hassle-free shipping as the folded house fits on common truck or container and simple and easy on-site installation in just few hours.







## PRODUCTION PLANT

A mix of traditional craftsmanship and technological innovation, with advanced production facilities that are spread over an area of 20,000 square meters, taking shape as an important reference in the market of wooden buildings, with a focus on green building.

The environment is the protagonist of each project and its compliance with an essential element of our corporate philosophy.

A spirit of enterprise that innovates in the name of progress and accountability. A team of experienced professionals is available to the customer to offer a complete and personalized service, able to respond to any request and fulfill any need.

A technical department composed by architects engineers and surveyors, analyzes requests and identify the most appropriate solutions.

Inside the plant, in an area set up specifically, we study the prototypes whose ultimate realization is guaranteed by cutting edge technology and experienced operators.



# A-FOLD

h o u s e s

GENERAL CATALOGUE 2022



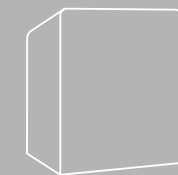
**MODEL A**

PAG. 8



**MODEL T**

PAG. 26



**MODEL C**

PAG. 44



# MODEL A

The first born in the A-FOLD houses family is inspired by traditional A-FRAME houses slightly revised to offer our customers a higher comfort in their daily life. The classic and still appealing design continue to captive approval all along the world from people who intend to live the dream of cosy, charming and functioning home.

## PERFECT SOLUTION FOR

RESIDENTIAL HOUSES

SPORT VILLAGES

RESORTS

DISASTERS RELIEF



VIEW GALLERY



ROOF

P. 64



FACADE

P. 68



FLOOR

P. 72



DOORS

P. 78



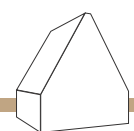
WINDOWS

P. 80

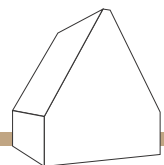


BATH

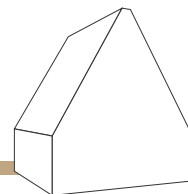
P. 86



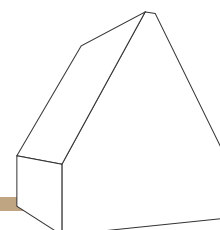
CABIN 51 MQ



YOUNG 75 MQ



FAMILY 100 MQ



VILLA 125 MQ



## MODEL A

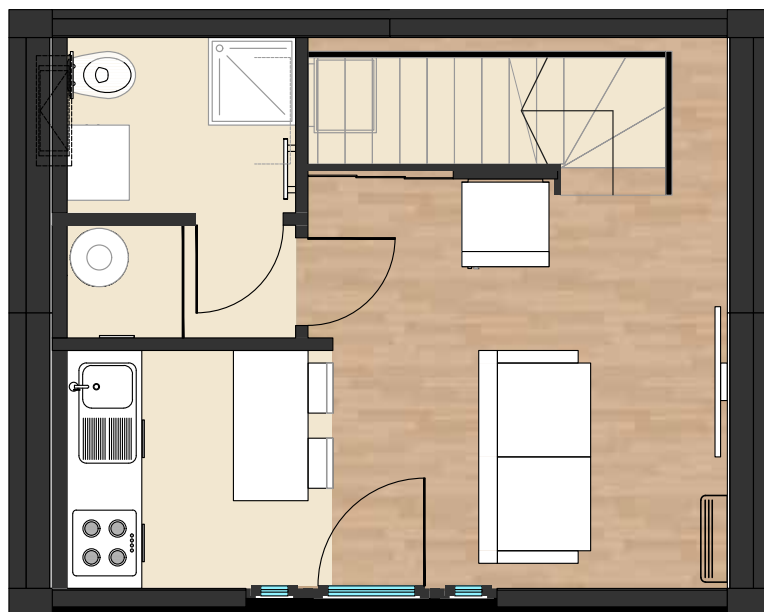
### CABIN

**CABIN FLOOR AREA MQ 37,11**  
**GROSS AREA MQ 51,82**

This is the basic model that can be used for numerous purposes. Mainly used by tour operators to build resorts and glamping, CABIN fits very well as a second house too where you will spend amazing days out of the city.

#### GROUND FLOOR

- 1 bathroom
- 1 kitchen
- 1 Living



#### FIRST FLOOR

- 1 bedroom



## MODEL A

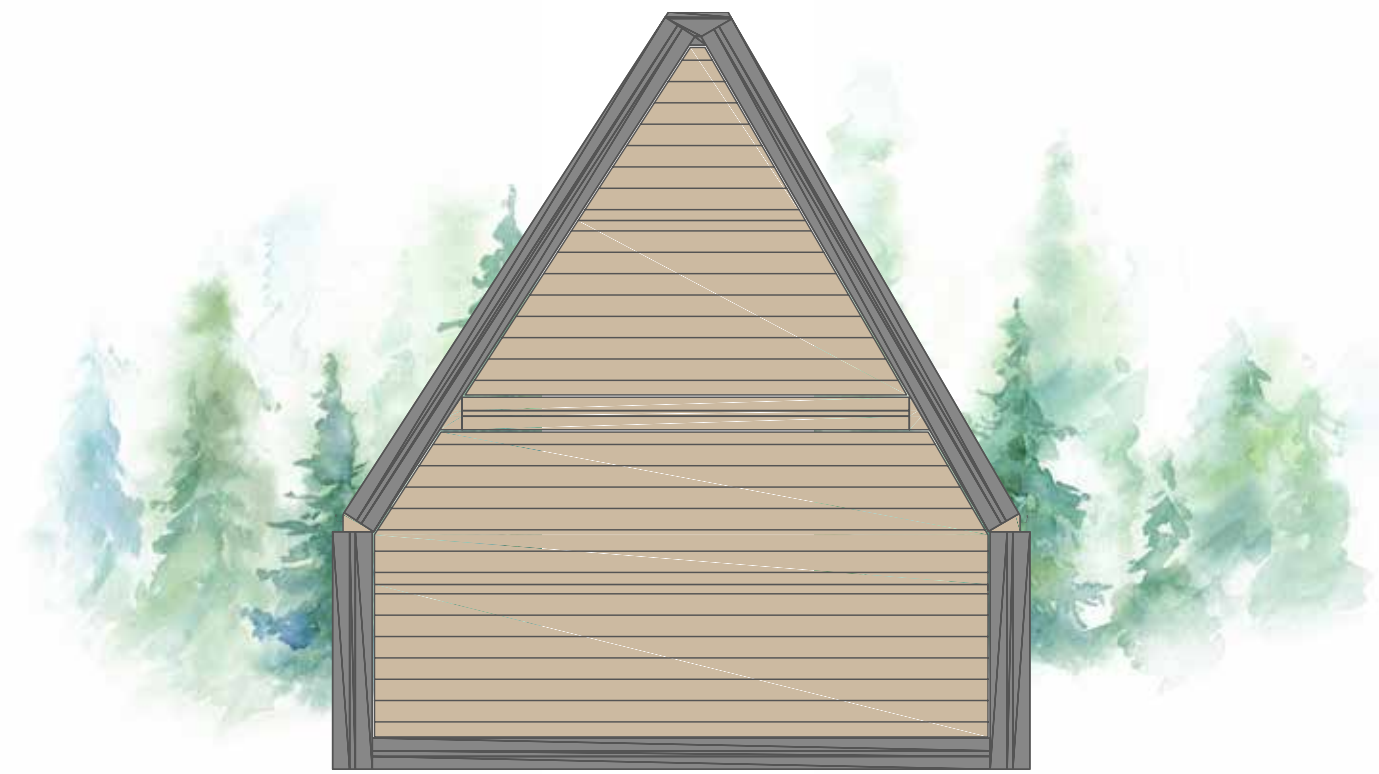
### CABIN

#### FRONT FACADE

Entrance door 200x215  
window 1n° 100x215  
n° 1 roof window



#### BACK FACADE



CABIN 51 MQ

**MODEL A**

**CABIN BALCONY**

**CABIN FLOOR AREA MQ 37,11**  
**GROSS AREA MQ 51,82**

This is the basic model that can be used for numerous purposes. Mainly used by tour operators to build resorts and glamping, CABIN fits very well as a second house too where you will spend amazing days out of the city.

**GROUND FLOOR**

- 1 bathroom
- 1 kitchen
- 1 Living
- 1 balcony



**FIRST FLOOR**

- 1 bedroom
- 1 balcony



CABIN 51 MQ

**MODEL A**

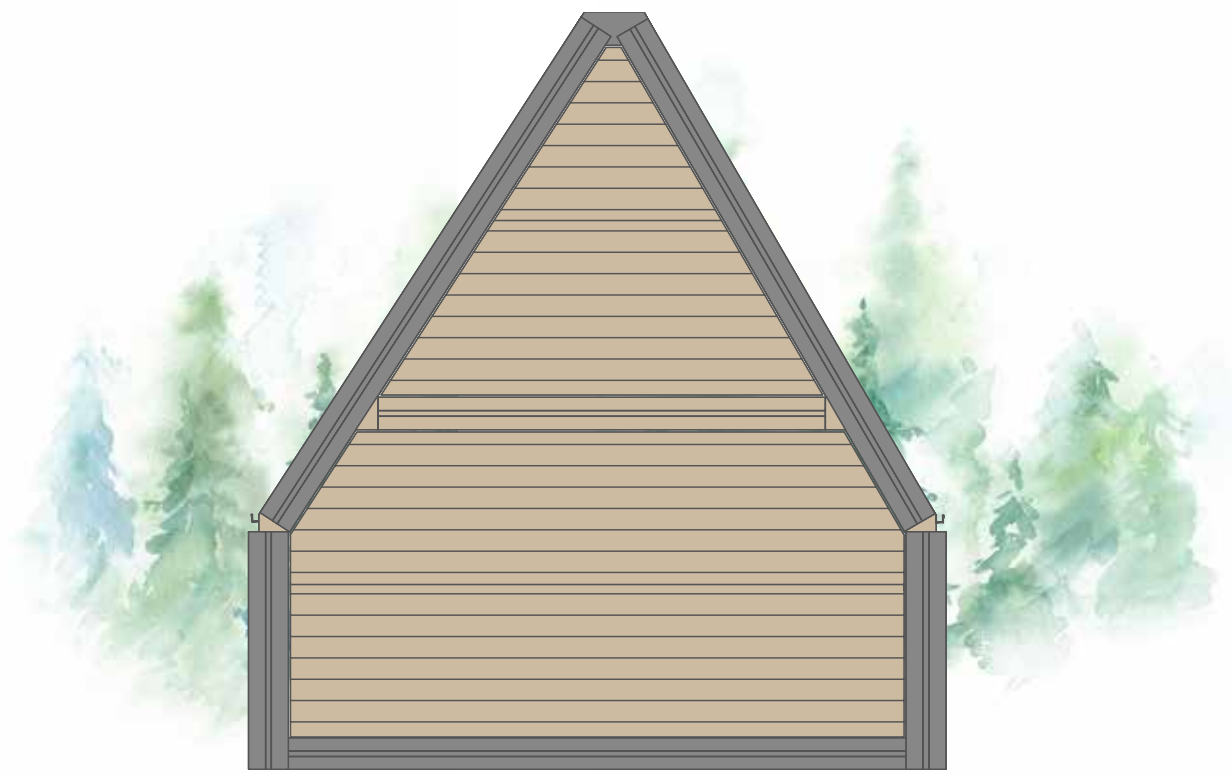
**CABIN BALCONY**

**FRONT FACADE**

Entrance door 200x215  
window 1n° 100x215  
n° 1 roof window



**BACK FACADE**



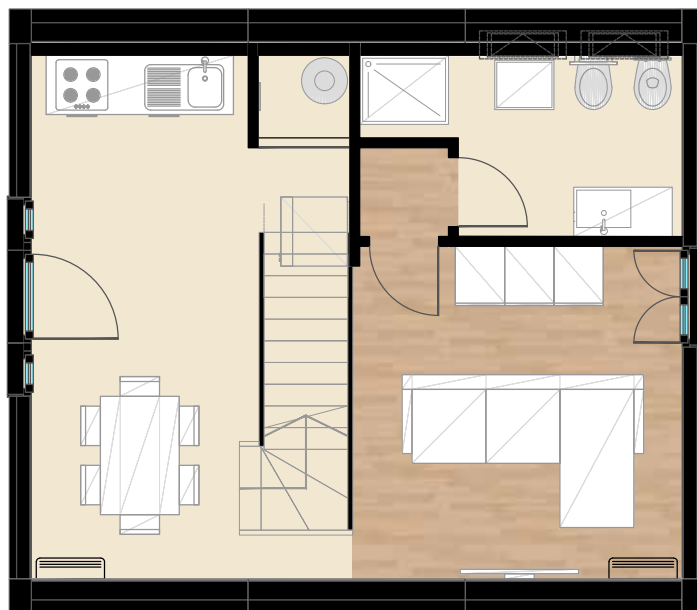
MODEL A  
YOUNG

YOUNG FLOOR AREA MQ 57,83  
GROSS AREA MQ 75,35

Much appreciated as a holiday home YOUNG is the way for young couples who intend to grow by taking advantage of two rooms house.

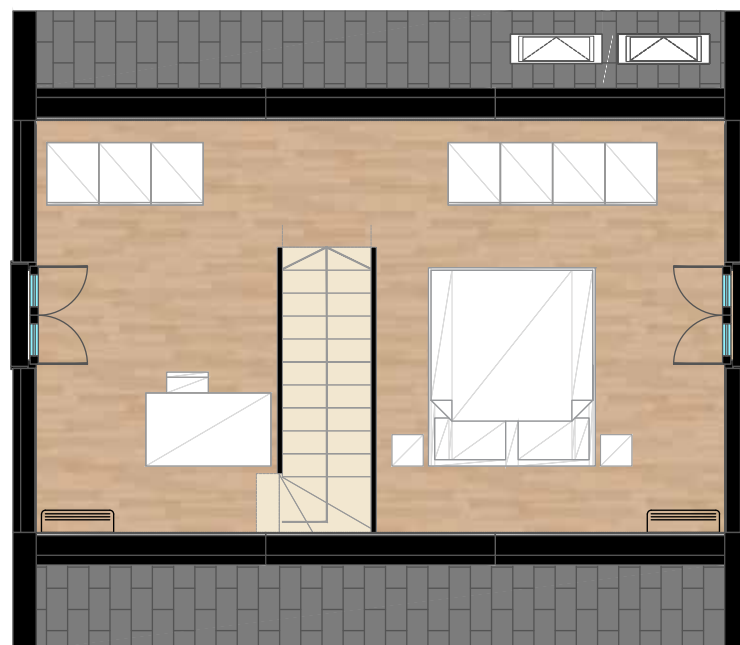
GROUND FLOOR

1 bathroom  
1 kitchen  
1 Living



FIRST FLOOR

1 bedroom  
1 study room



YOUNG 75 MQ

MODEL A  
YOUNG

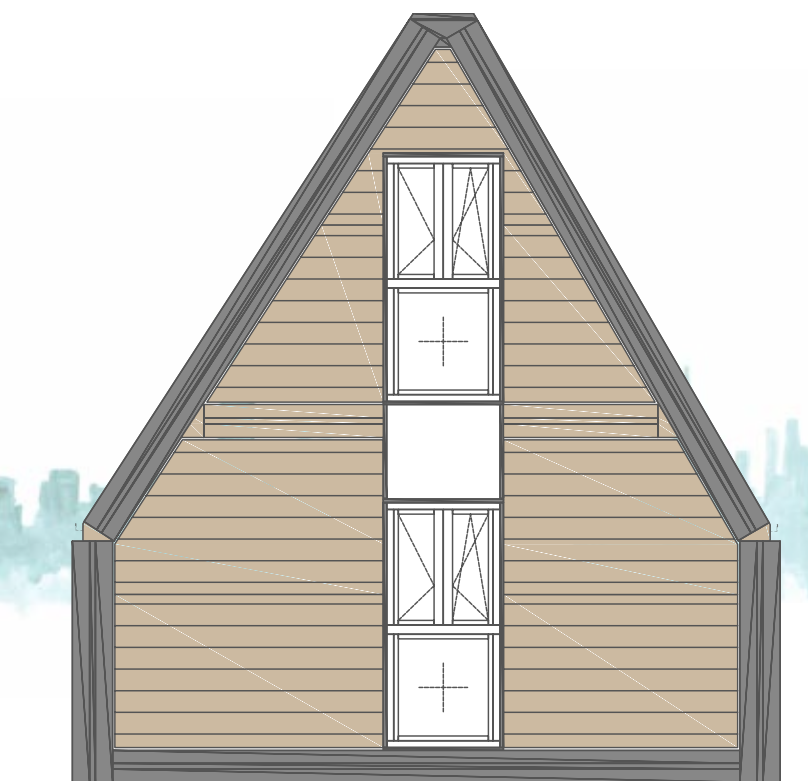
FRONT FACADE

Entrance door 200x215  
window 100x215



BACK FACADE

Windows n° 2 100x215  
n° 2 roof windows





MODEL A

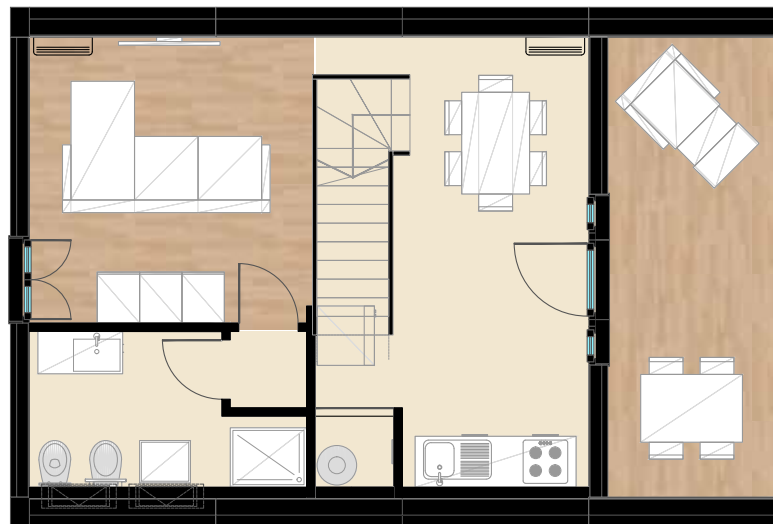
YOUNG BALCONY

YOUNG FLOOR AREA MQ 57,83  
GROSS AREA MQ 75,35

Much appreciated as a holiday home YOUNG is the way for young couples who intend to grow by taking advantage of two rooms house.

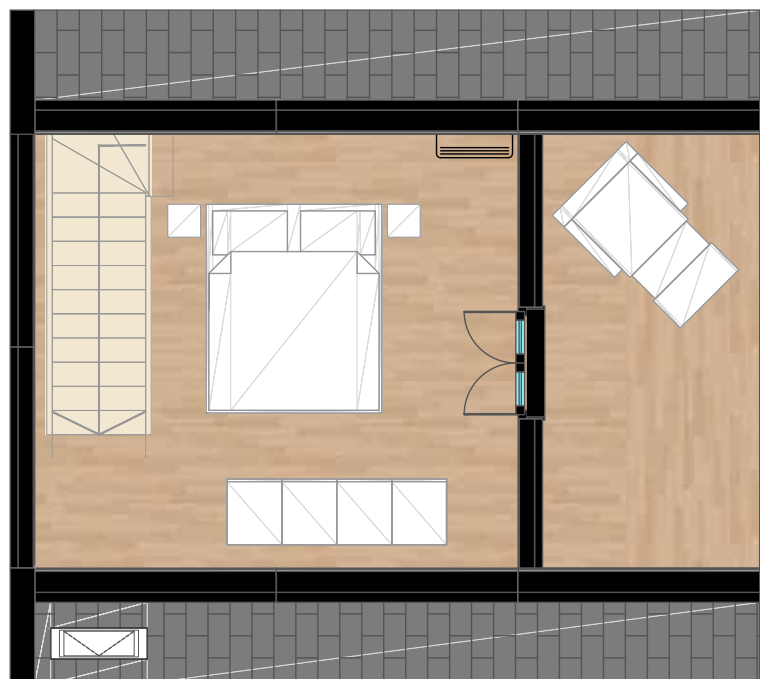
GROUND FLOOR

- 1 bathroom
- 1 kitchen
- 1 Living
- 1 balcony



FIRST FLOOR

- 1 bedroom
- 1 balcony



YOUNG 75 MQ

MODEL A

YOUNG BALCONY

FRONT FACADE

Entrance door 200x215  
window 100x215



BACK FACADE

Windows n° 2 100x215  
n° 2 roof windows



**MODEL A**  
FAMILY

**FAMILY FLOOR AREA MQ 75,38**  
**GROSS AREA MQ 98,98**

With its 3 bedrooms, this model has been named FAMILY not by chance. FAMILY provides a huge living space, 3 bedrooms and 2 bathrooms. That's what we call a smart way of living.

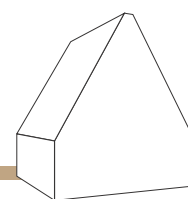
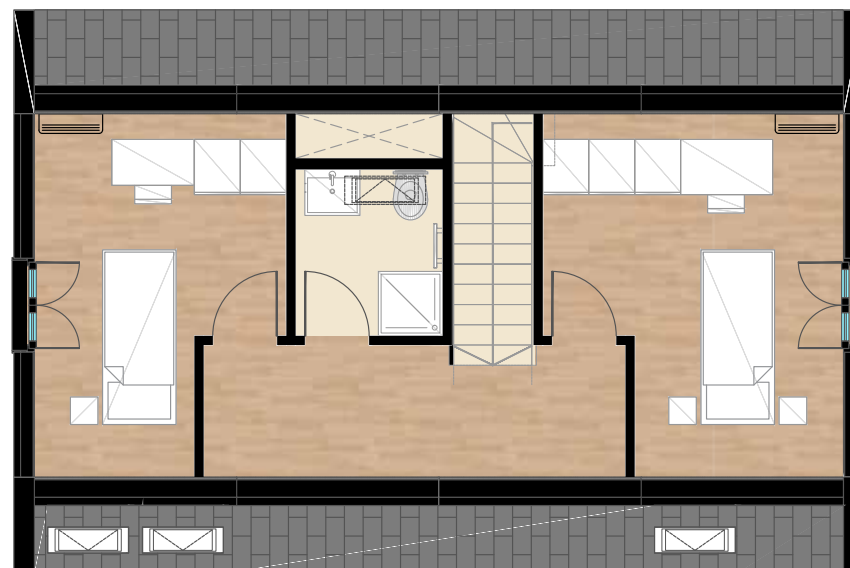
**GROUND FLOOR**

1 bathroom  
1 bedroom  
1 kitchen  
1 Living



**FIRST FLOOR**

2 bedroom  
1 bathroom



FAMILY 100 MQ

**MODEL A**  
FAMILY

**FRONT FACADE**

Windows n° 2 100x215  
n° 3 roof windows



**BACK FACADE**

Windows n° 2 100x215  
n° 3 roof windows



## MODEL A

### FAMILY BALCONY

**FAMILY FLOOR AREA MQ 75,38**  
**GROSS AREA MQ 98,98**

With its 3 bedrooms, this model has been named FAMILY not by chance. FAMILY provides a huge living space, 3 bedrooms and 2 bathrooms. That's what we call a smart way of living.

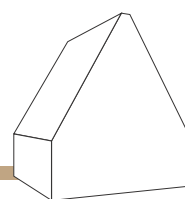
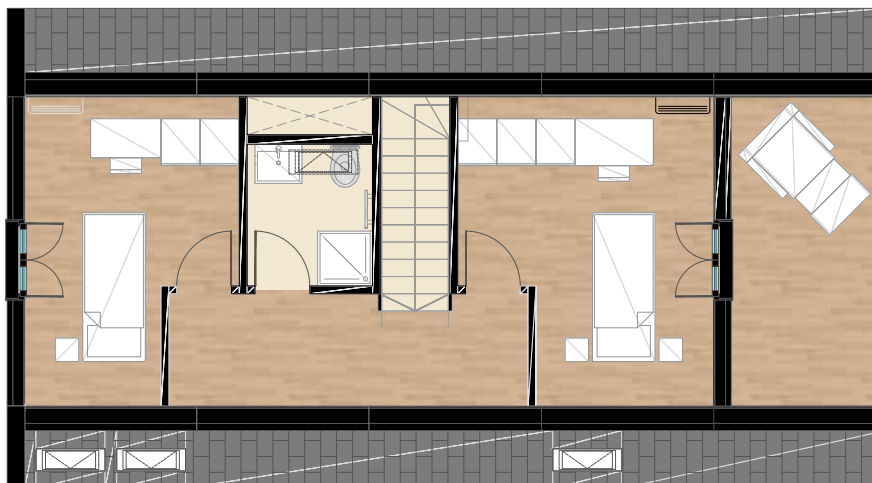
#### GROUND FLOOR

1 bathroom  
1 bedroom  
1 kitchen  
1 Living  
1 balcony



#### FIRST FLOOR

2 bedroom  
1 bathroom  
1 balcony



FAMILY 100 MQ

## MODEL A

### FAMILY BALCONY

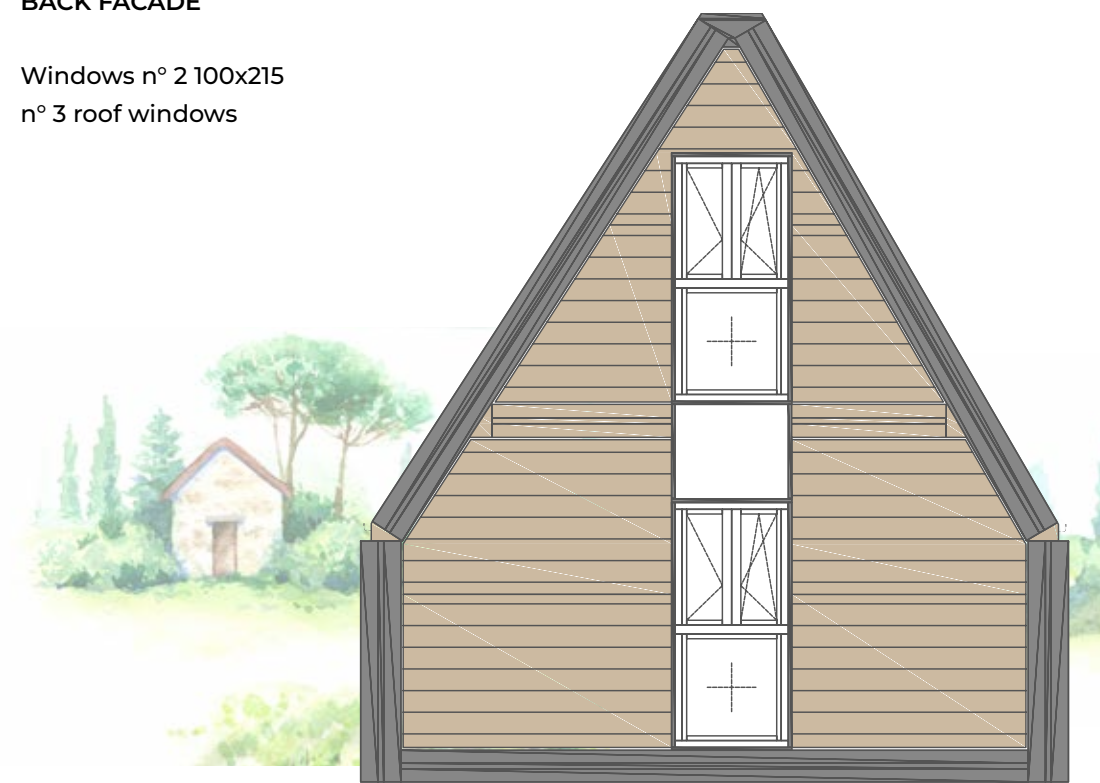
#### FRONT FACADE

Entrance door 200x215  
window 100x215



#### BACK FACADE

Windows n° 2 100x215  
n° 3 roof windows





## MODEL A

### VILLA

**VILLA FLOOR AREA MQ 95,75**  
**GROSS AREA MQ 122,40**

Our flagship is the largest A-FOLD houses in standard production with its 3 bedrooms and 2 bathrooms. VILLA can satisfy the needs of a large family but it could be also customized for different purposes, playing with the huge spaces you redesign VILLA according to your spirit and your dreams.

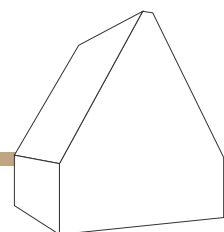
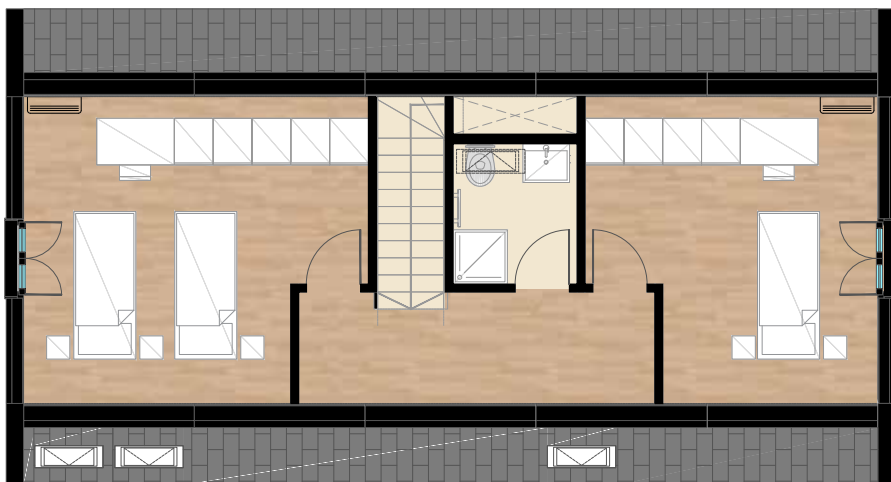
#### GROUND FLOOR

1 bathroom  
1 bedroom  
1 kitchen  
1 Living



#### FIRST FLOOR

2 bedroom  
1 bathroom



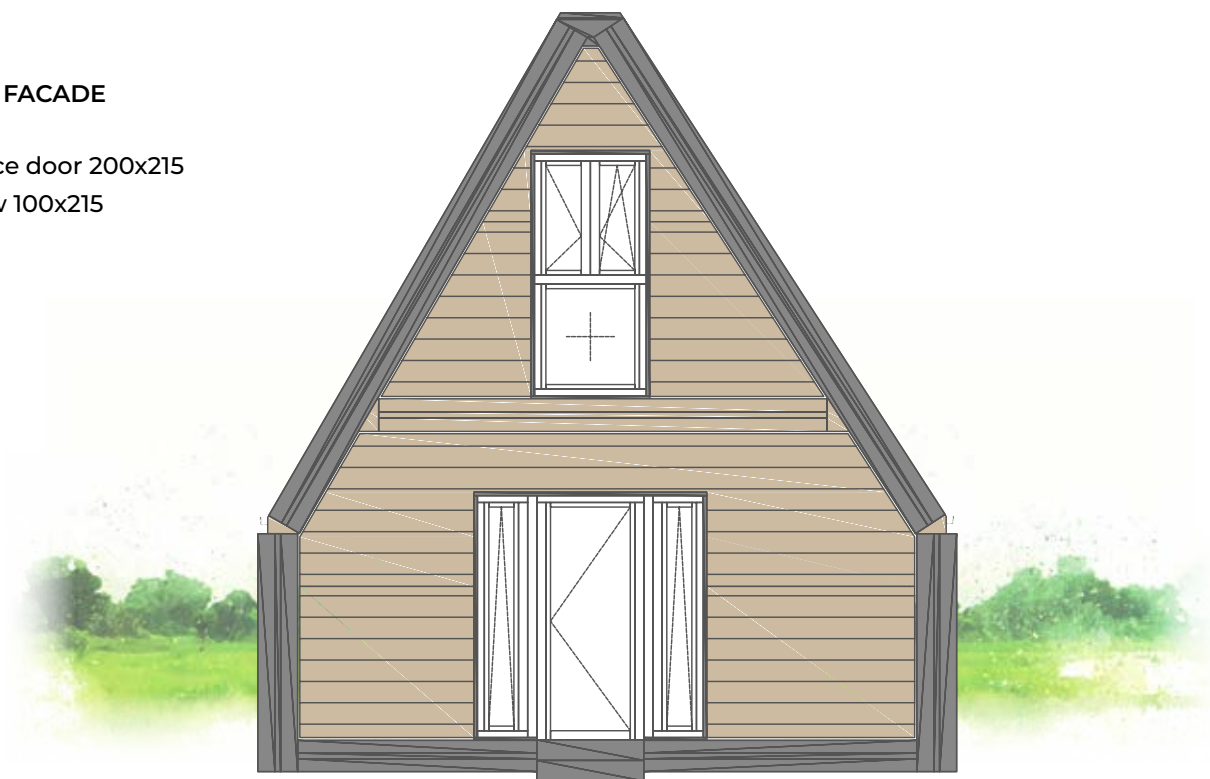
VILLA 125 MQ

## MODEL A

### VILLA

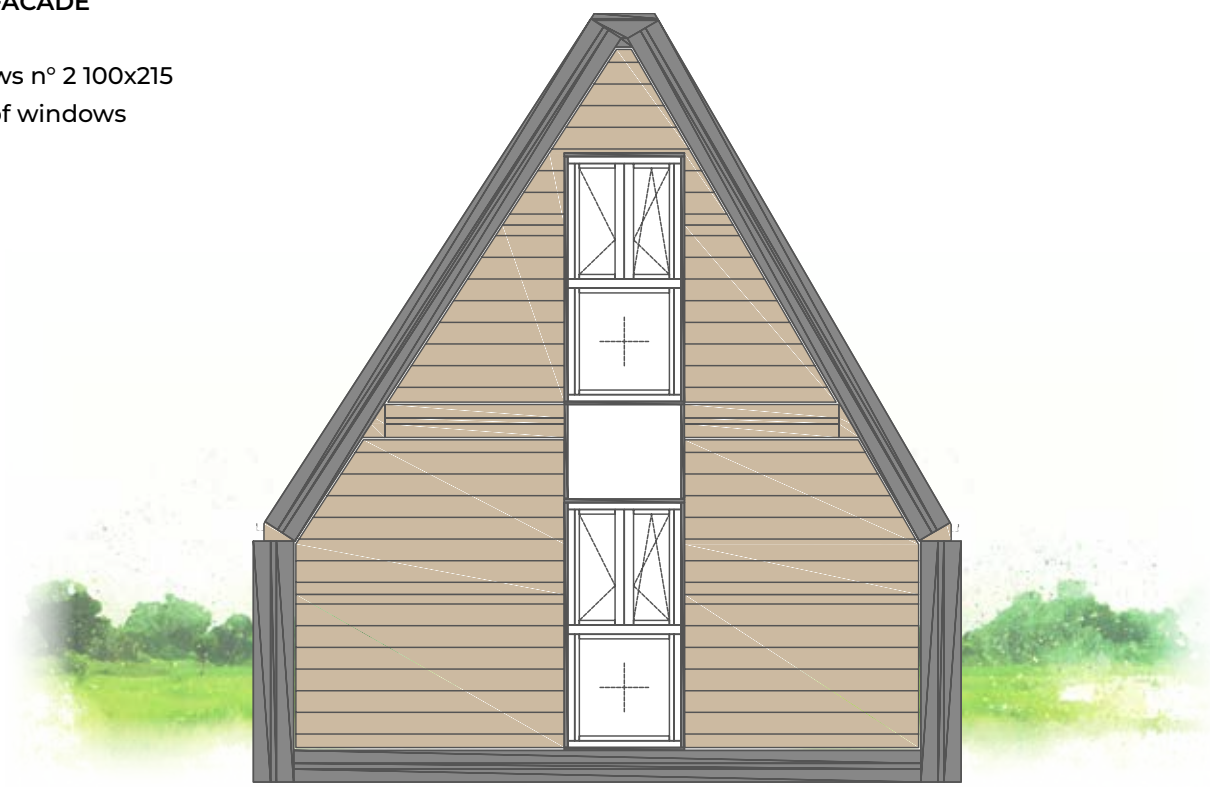
#### FRONT FACADE

Entrance door 200x215  
window 100x215



#### BACK FACADE

Windows n° 2 100x215  
n° 3 roof windows



## MODEL A

### VILLA BALCONY

**VILLA FLOOR AREA MQ 95,75**  
**GROSS AREA MQ 122,40**

Our flagship is the largest A-FOLD houses in standard production with its 3 bedrooms and 2 bathrooms. VILLA can satisfy the needs of a large family but it could be also customized for different purposes, playing with the huge spaces you redesign VILLA according to your spirit and your dreams.

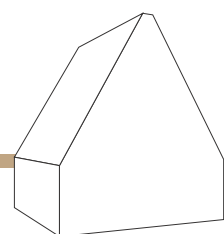
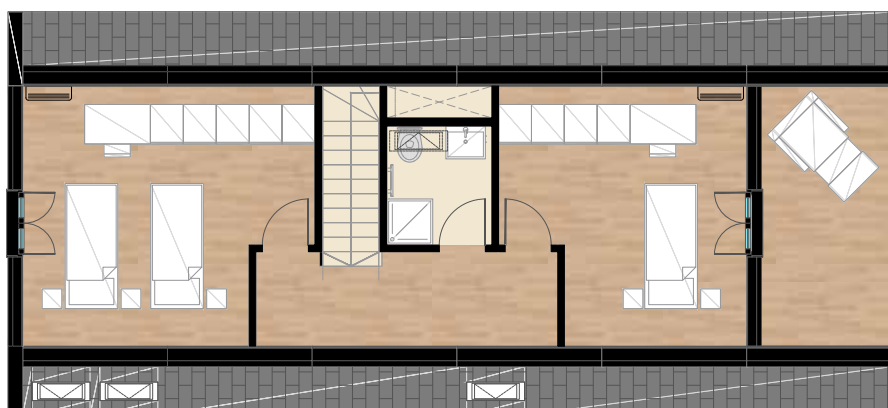
#### GROUND FLOOR

1 bathroom  
1 bedroom  
1 kitchen  
1 Living  
1 balcony



#### FIRST FLOOR

2 bedroom  
1 bathroom  
1 balcony



VILLA 125 MQ

## MODEL A

### VILLA BALCONY

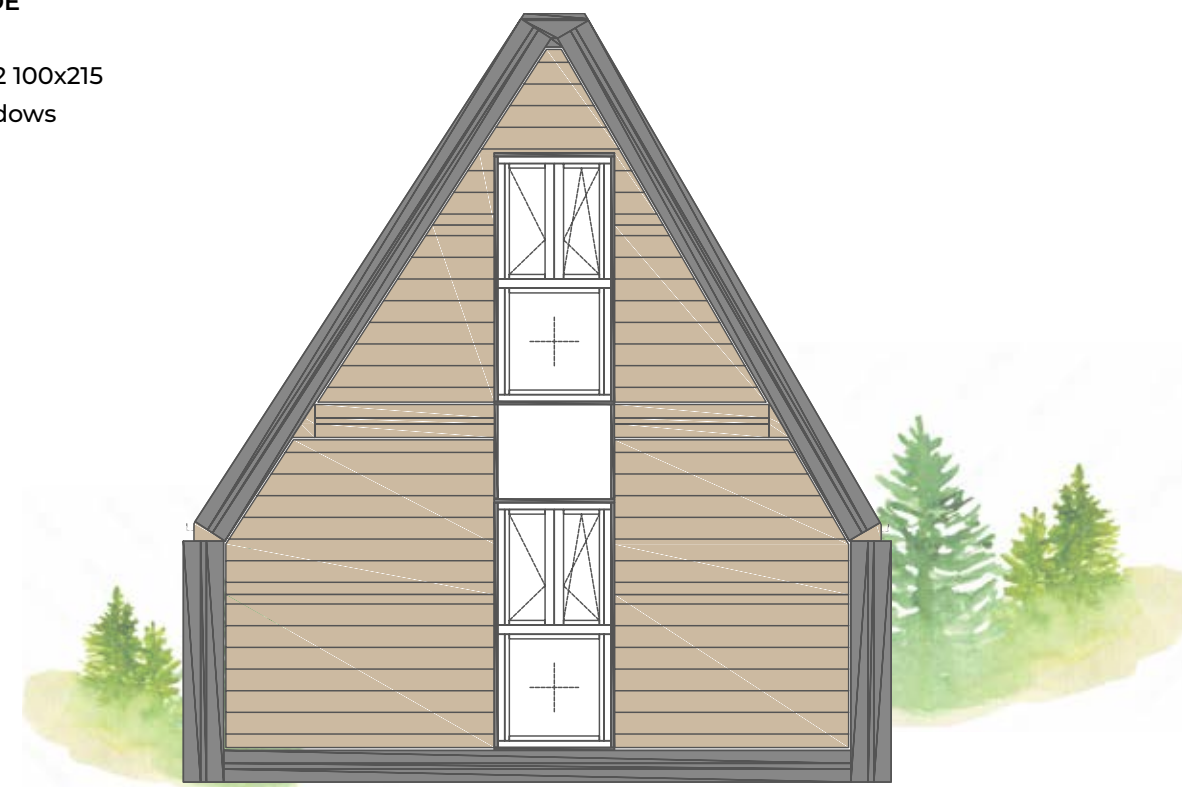
#### FRONT FACADE

Entrance door 200x215  
window 100x215



#### BACK FACADE

Windows n° 2 100x215  
n° 3 roof windows





# MODEL T

A modern design never seen before thought for the ones who want to distinguish themselves with an architectural sign of modernity. The trapezoidal shape ensures almost the same surface between ground and first floor giving you an increased liveable surface to contain all your happiness.

## PERFECT SOLUTION FOR

RESIDENTIAL HOUSES

SPORT VILLAGES

RESORTS

DISASTERS RELIEF



VIEW GALLERY



ROOF

P. 64



FACADE

P. 68



FLOOR

P. 72



DOORS

P. 78



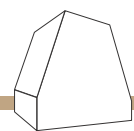
WINDOWS

P. 80

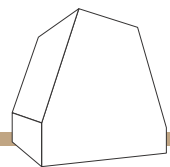


BATH

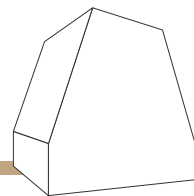
P. 86



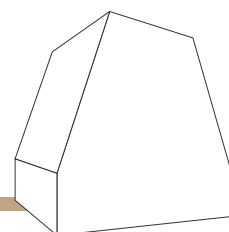
CABIN 51 MQ



YOUNG 75 MQ



FAMILY 100 MQ



VILLA 125 MQ



MODEL T

CABIN

CABIN FLOOR AREA MQ 39,96  
GROSS AREA MQ 55,48

This is the basic model that can be used for numerous purposes. Mainly used by tour operators to build resorts and glamping, CABIN fits very well as a second house too where you will spend amazing days out of the city.

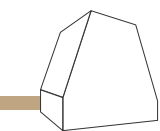
GROUND FLOOR

1 bathroom  
1 kitchen  
1 living



FIRST FLOOR

1 bedroom



CABIN 52 MQ

MODEL T

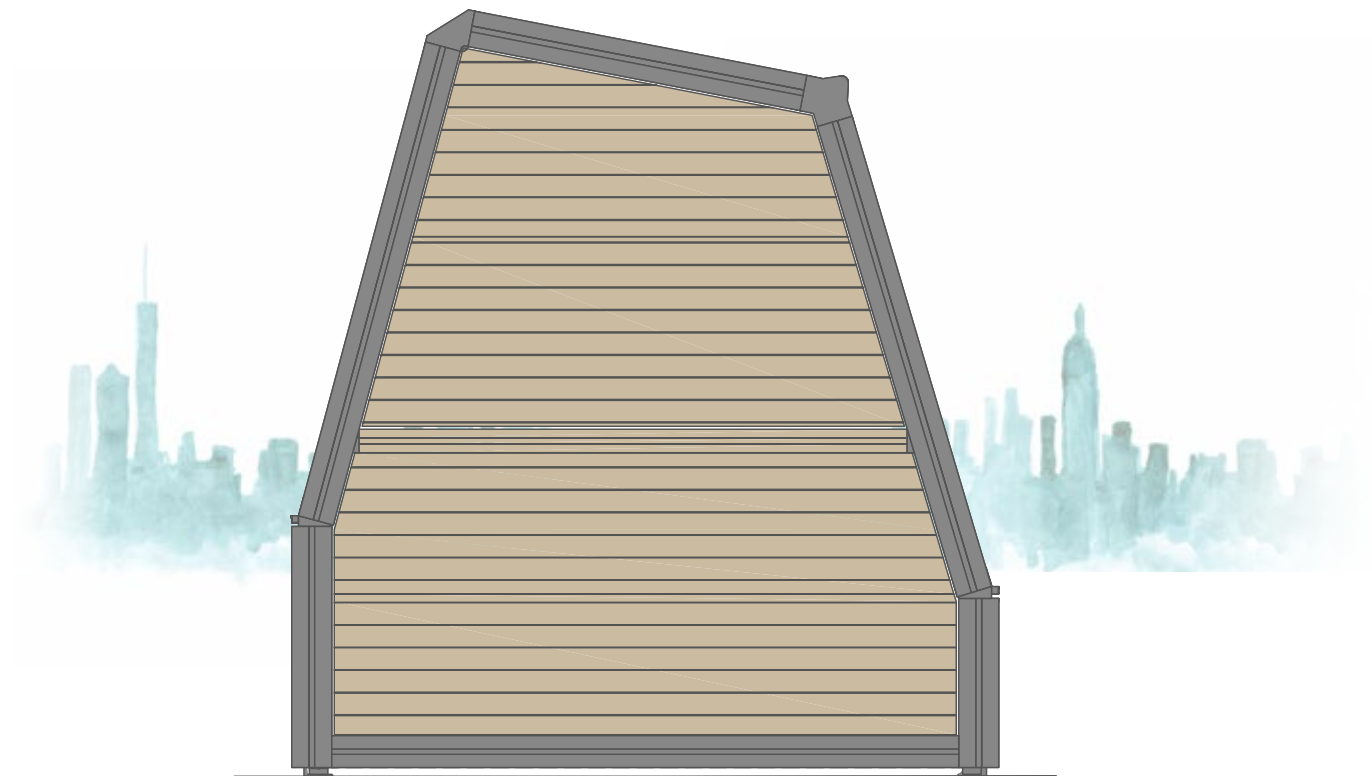
CABIN

FRONT FACADE

Entrance door 200x215  
window 100x215  
n° 1 roof window



BACK FACADE



**MODEL T**

**CABIN BALCONY**

**CABIN FLOOR AREA MQ 39,96**  
**GROSS AREA MQ 55,48**

This is the basic model that can be used for numerous purposes. Mainly used by tour operators to build resorts and glamping, CABIN fits very well as a second house too where you will spend amazing days out of the city.

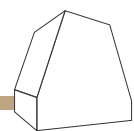
**GROUND FLOOR**

- 1 bathroom
- 1 kitchen
- 1 living
- 1 balcony



**FIRST FLOOR**

- 1 bedroom
- 1 balcony



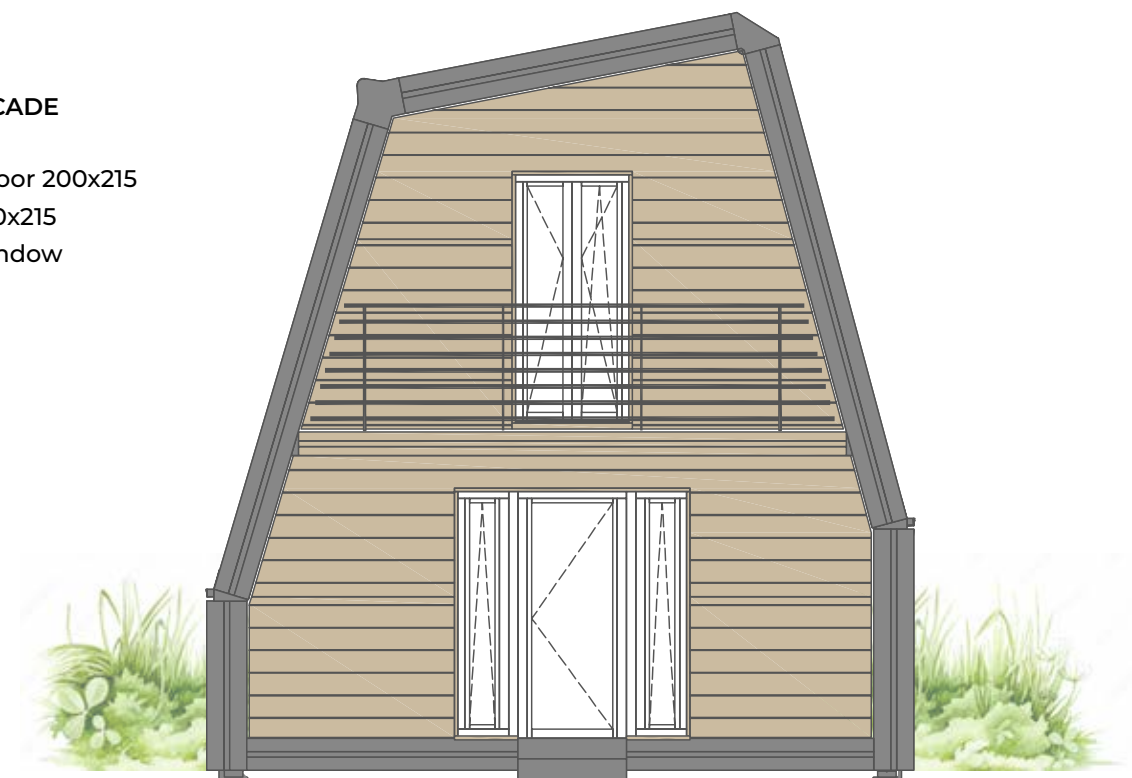
YOUNG 66 MQ

**MODEL T**

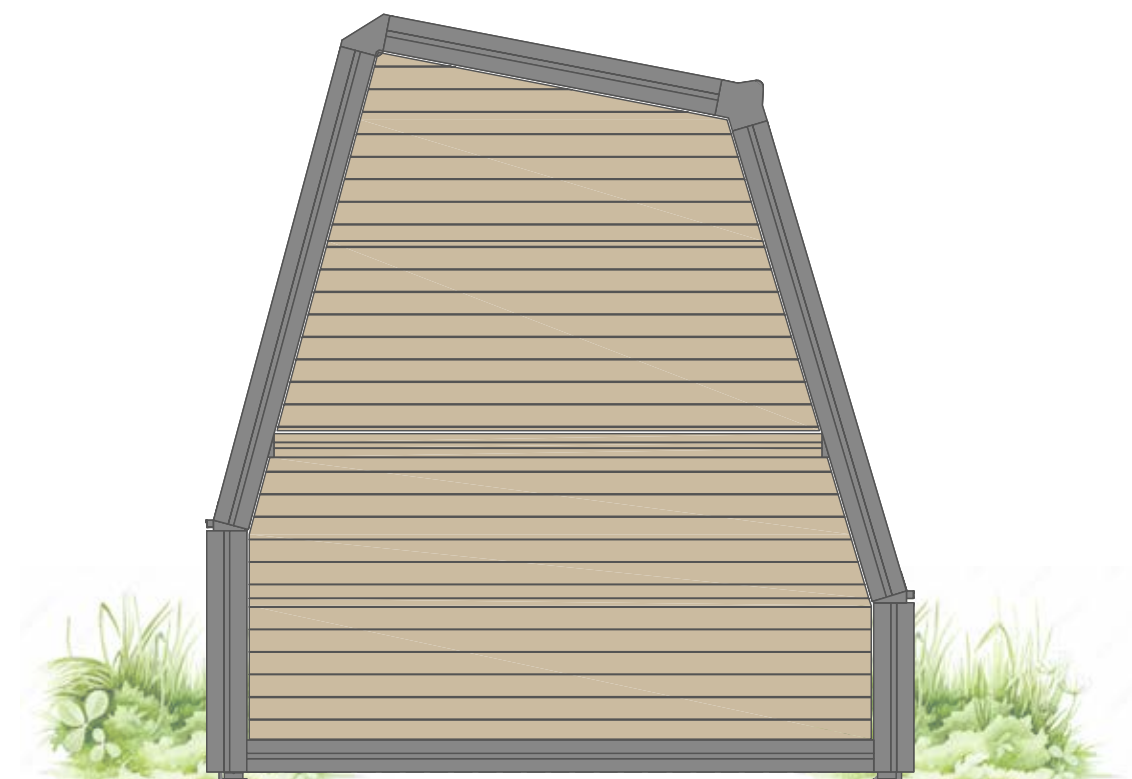
**CABIN BALCONY**

**FRONT FACADE**

Entrance door 200x215  
window 100x215  
n° 1 roof window



**BACK FACADE**



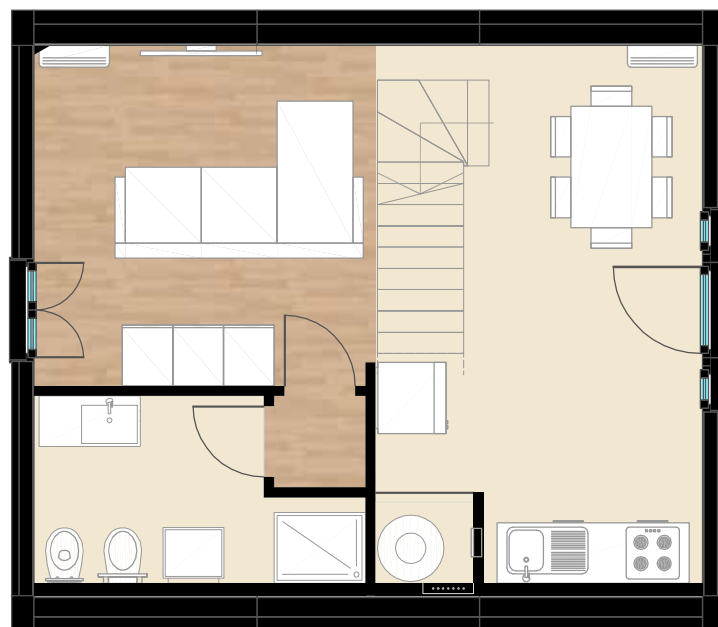
MODEL T  
YOUNG

YOUNG FLOOR AREA MQ 61,75  
GROSS AREA MQ 80,68

Much appreciated as a holiday home YOUNG is the way for young couples who intend to grow by taking advantage of two rooms house.

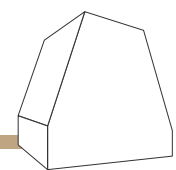
GROUND FLOOR

1 bathroom  
1 kitchen  
1 living



FIRST FLOOR

2 bedroom



YOUNG 75 MQ

MODEL T  
YOUNG

FRONT FACADE

Entrance door 200x215  
window 100x215



BACK FACADE

Windows n° 2 100x215  
n° 2 roof windows





**MODEL T**

**YOUNG BALCONY**

**YOUNG FLOOR AREA MQ 61,75**  
**GROSS AREA MQ 80,68**

Much appreciated as a holiday home YOUNG is the way for young couples who intend to grow by taking advantage of two rooms house.

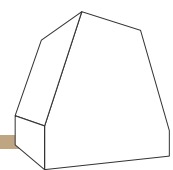
**GROUND FLOOR**

- 1 bathroom
- 1 kitchen
- 1 living
- 1 balcony



**FIRST FLOOR**

- 2 bedroom
- 1 balcony



YOUNG 75 MQ

**MODEL T**

**YOUNG BALCONY**

**FRONT FACADE**

Entrance door 200x215  
window 100x215



**BACK FACADE**

Windows n° 2 100x215  
n° 2 roof windows



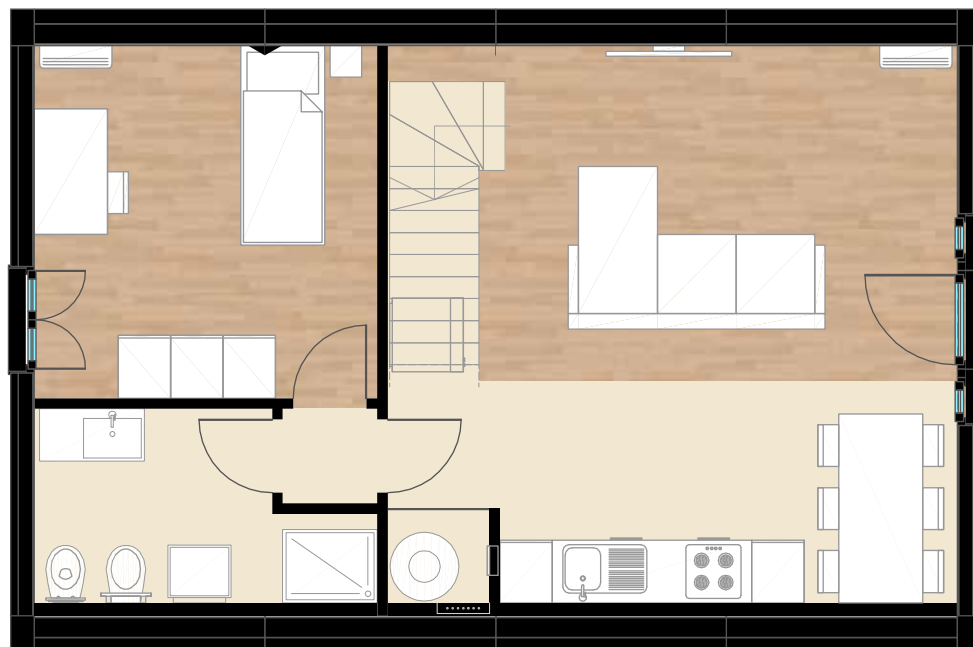
MODEL T  
FAMILY

FAMILY FLOOR AREA MQ 82,56  
GROSS AREA MQ 105,87

With its 3 bedrooms, this model has been named FAMILY not by chance. FAMILY provides a huge living space, 3 bedrooms and 2 bathrooms. That's what we call a smart way of living.

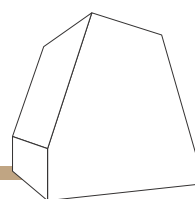
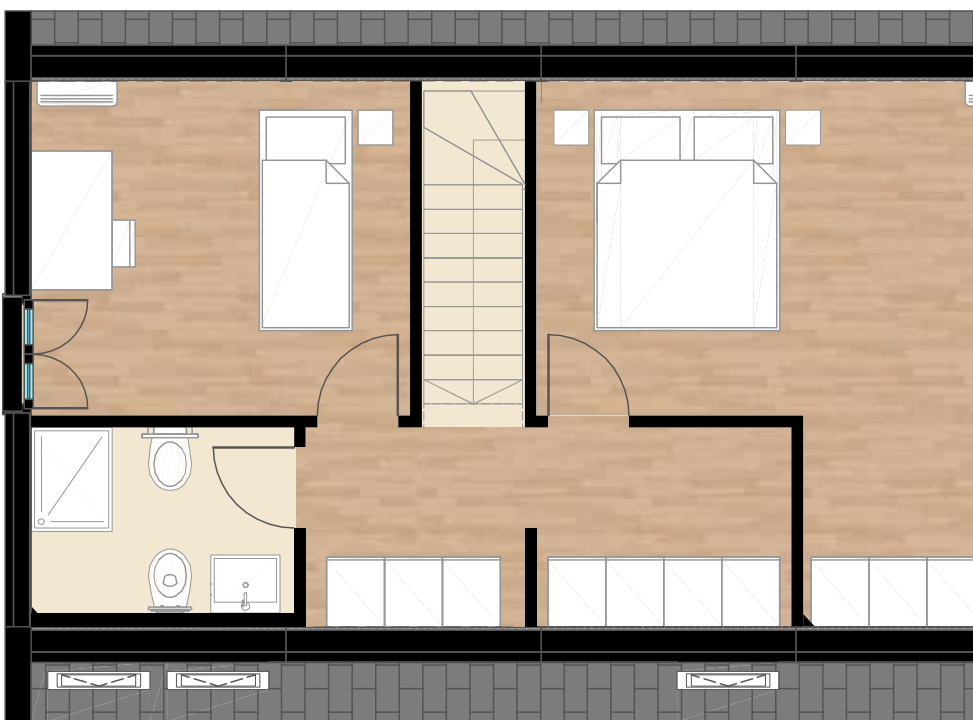
GROUND FLOOR

1 bathroom  
1 bedroom  
1 kitchen  
1 Living



FIRST FLOOR

2 bedroom  
1 bathroom



FAMILY 82 MQ

MODEL T  
FAMILY

FRONT FACADE

Entrance door 200x215  
window 100x215



BACK FACADE

Windows n° 2 100x215  
n° 3 roof windows



**MODEL T**

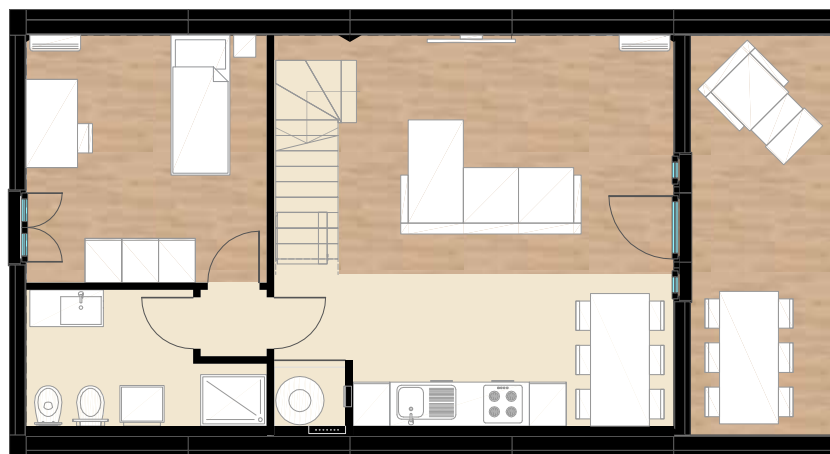
**FAMILY BALCONY**

**FAMILY FLOOR AREA MQ 82,56**  
**GROSS AREA MQ 105,87**

With its 3 bedrooms, this model has been named FAMILY not by chance. FAMILY provides a huge living space, 3 bedrooms and 2 bathrooms. That's what we call a smart way of living.

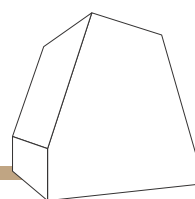
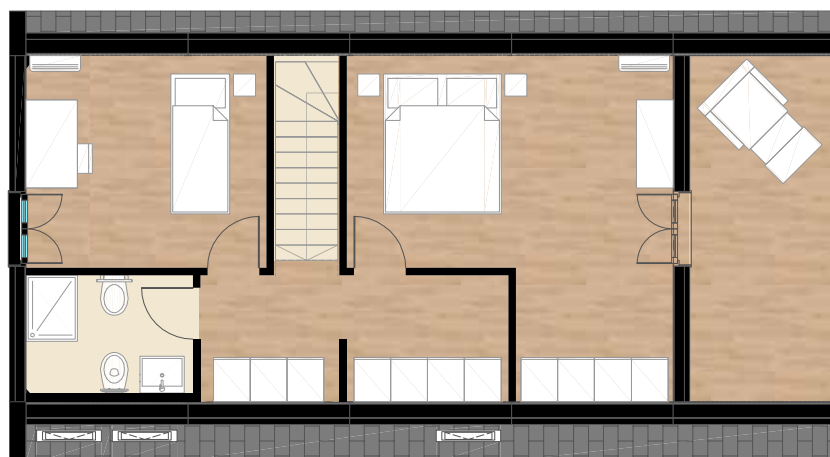
**GROUND FLOOR**

1 bathroom  
1 bedroom  
1 kitchen  
1 Living  
1 balcony



**FIRST FLOOR**

2 bedroom  
1 bathroom  
1 balcony



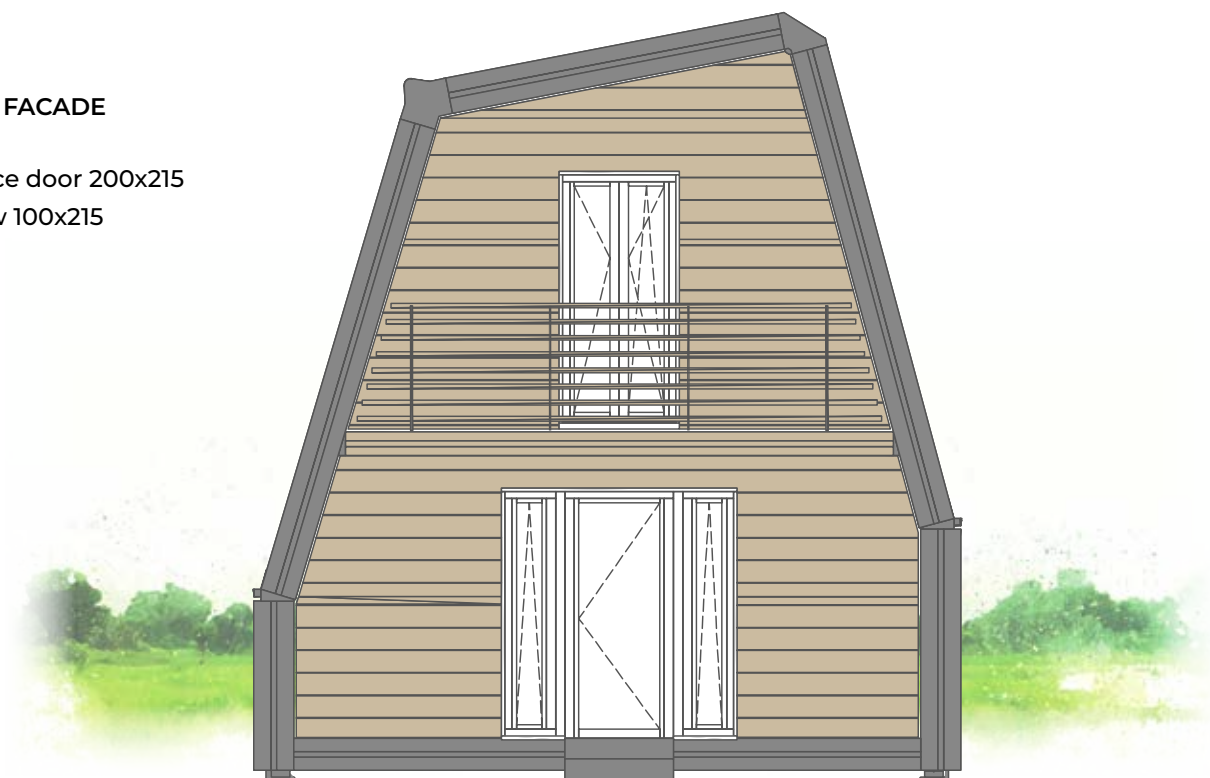
FAMILY 82 MQ

**MODEL T**

**FAMILY BALCONY**

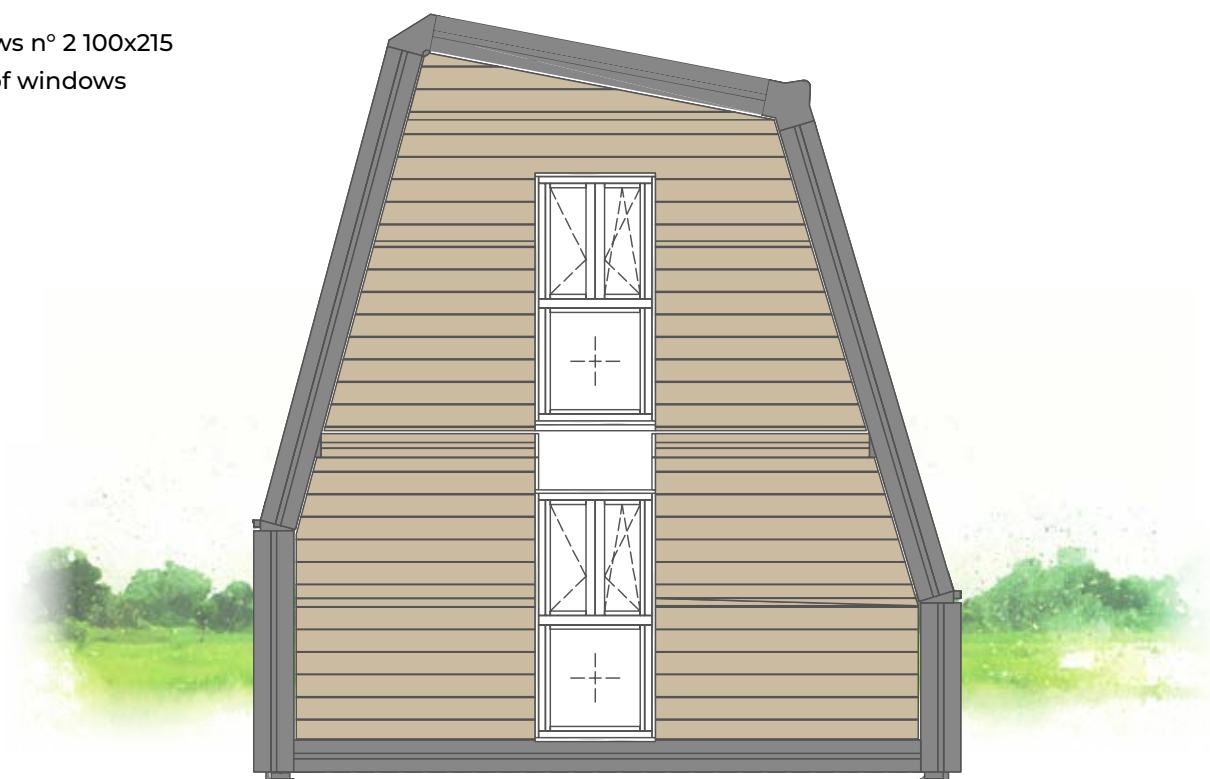
**FRONT FACADE**

Entrance door 200x215  
window 100x215



**BACK FACADE**

Windows n° 2 100x215  
n° 3 roof windows





MODEL T

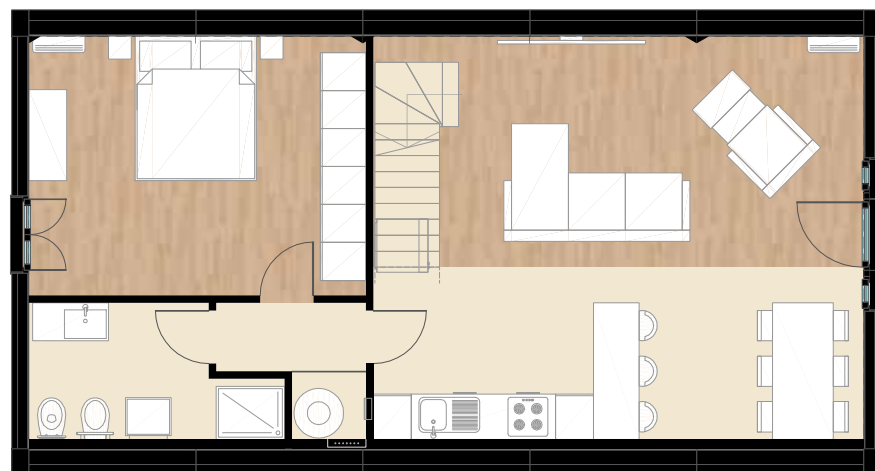
VILLA

VILLA FLOOR AREA MQ 104,11  
GROSS AREA MQ 131,06

Our flagship is the largest A-FOLD houses in standard production with its 3 bedrooms and 2 bathrooms. VILLA can satisfy the needs of a large family but it could be also customized for different purposes, playing with the huge spaces you redesign VILLA according to your spirit and your dreams.

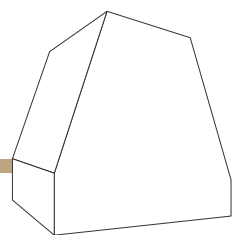
GROUND FLOOR

1 bathroom  
1 kitchen  
1 living



FIRST FLOOR

2 bedroom



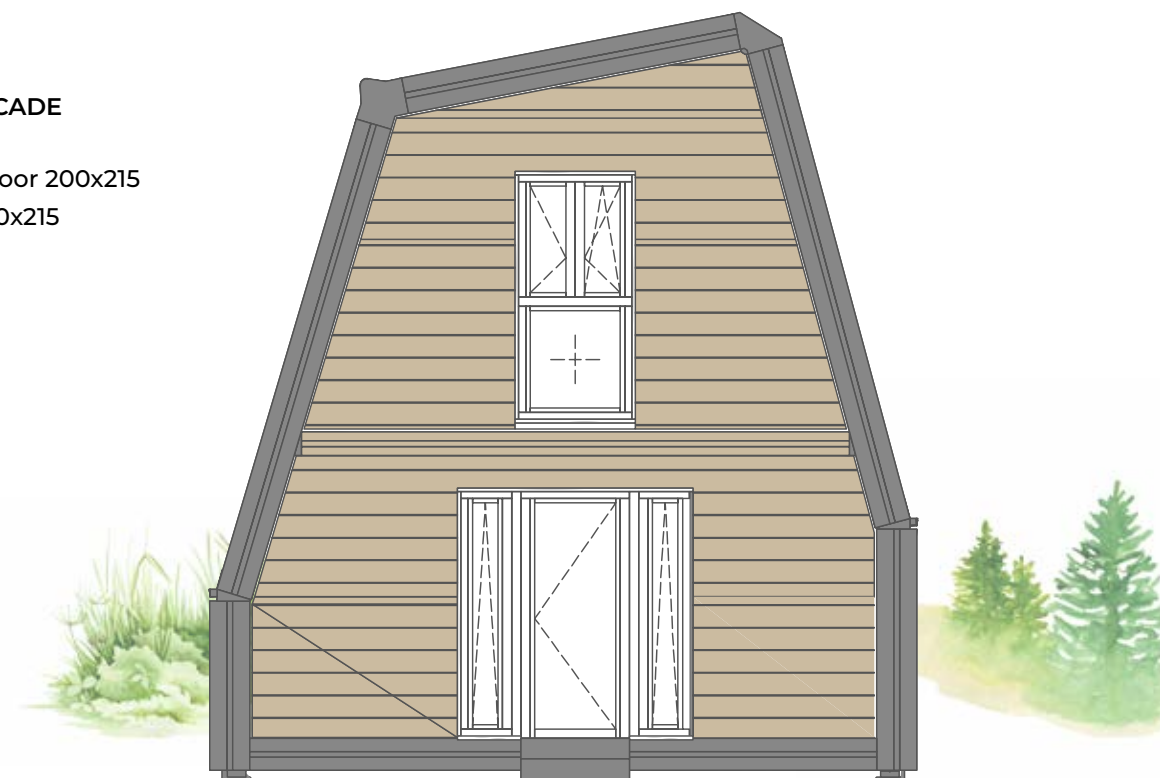
VILLA 104 MQ

MODEL T

VILLA

FRONT FACADE

Entrance door 200x215  
window 100x215



BACK FACADE

Windows n° 2 100x215  
n° 3 roof wndws



**MODEL T**

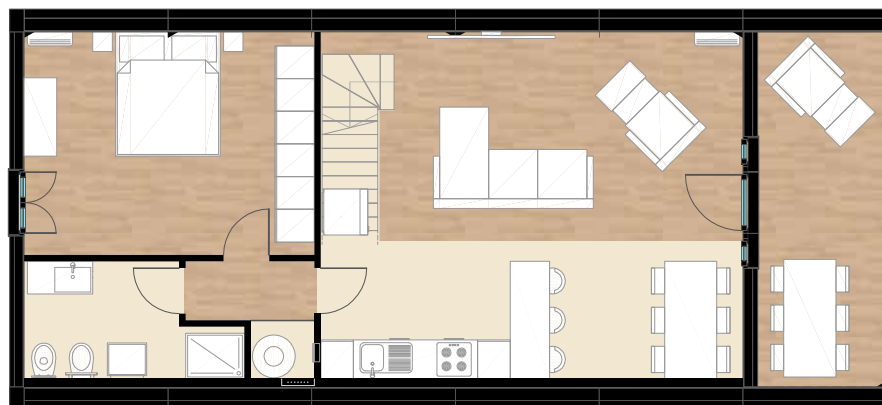
**VILLA BALCONY**

**VILLA FLOOR AREA MQ 104,11**  
**GROSS AREA MQ 131,06**

Our flagship is the largest A-FOLD houses in standard production with its 3 bedrooms and 2 bathrooms. VILLA can satisfy the needs of a large family but it could be also customized for different purposes, playing with the huge spaces you redesign VILLA according to your spirit and your dreams.

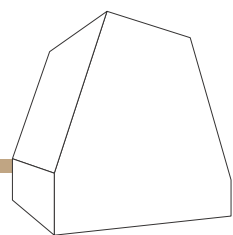
**GROUND FLOOR**

- 1 bedroom
- 1 bathroom
- 1 kitchen
- 1 living
- 1 balcony



**FIRST FLOOR**

- 2 bedroom
- 1 balcony



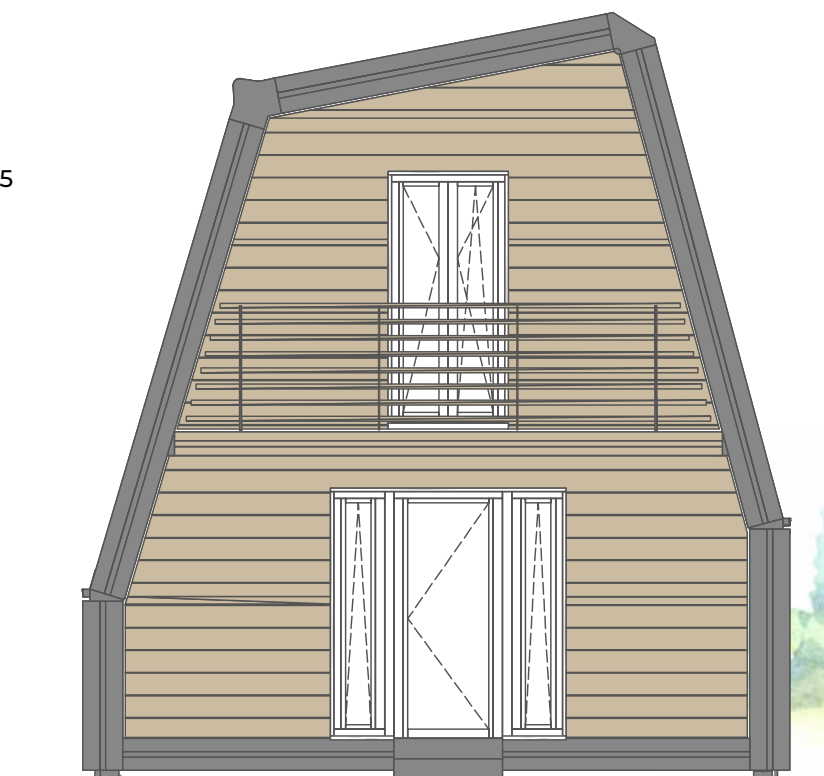
**VILLA 104 MQ**

**MODEL T**

**VILLA BALCONY**

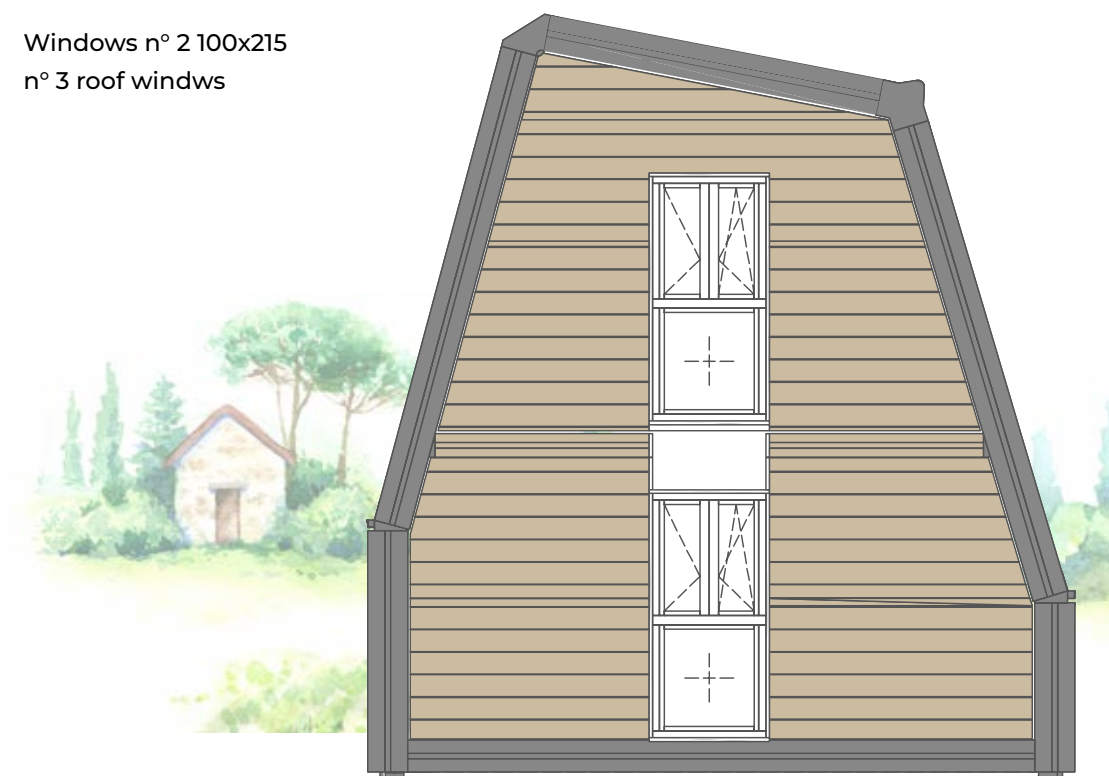
**FRONT FACADE**

Entrance door 200x215  
window 100x215



**BACK FACADE**

Windows n° 2 100x215  
n° 3 roof windows



# MODEL C

This model's minimalist design is a rational answer to the modern living challenge. A real double stories building that can suits any kind of purpose from residential to commercial in a smart and functioning way. You can enjoy your spaces within an infinite range of possibilities that will surprise you day by day.

## PERFECT SOLUTION FOR

RESIDENTIAL HOUSES

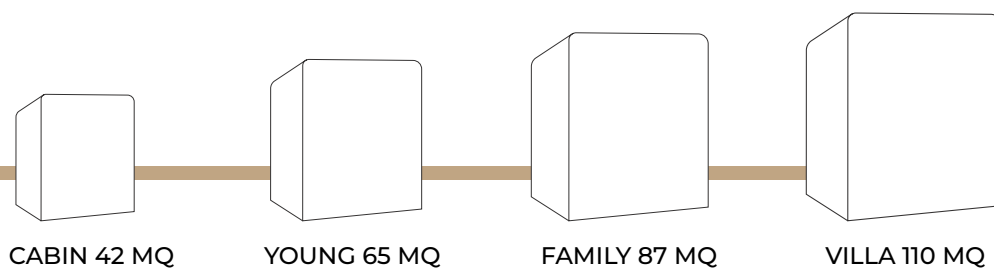
SPORT VILLAGES

RESORTS

DISASTERS RELIEF



VIEW GALLERY



ROOF  
P. 64



FACADE  
P. 68



FLOOR  
P. 72



DOORS  
P. 78



WINDOWS  
P. 80



BATH  
P. 86



**MODEL C**

**CABIN**

**CABIN FLOOR AREA MQ 42,30**  
**GROSS AREA MQ 59,37**

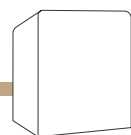
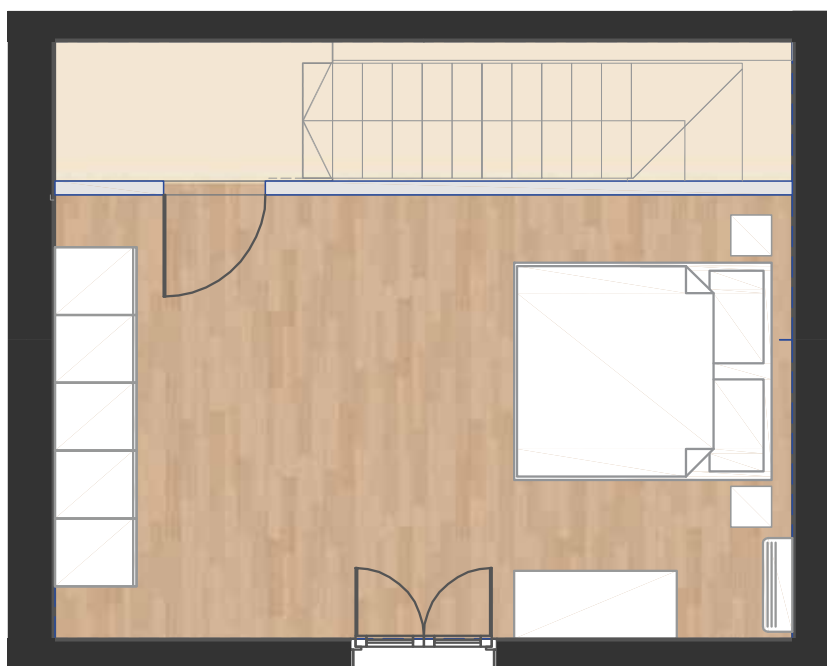
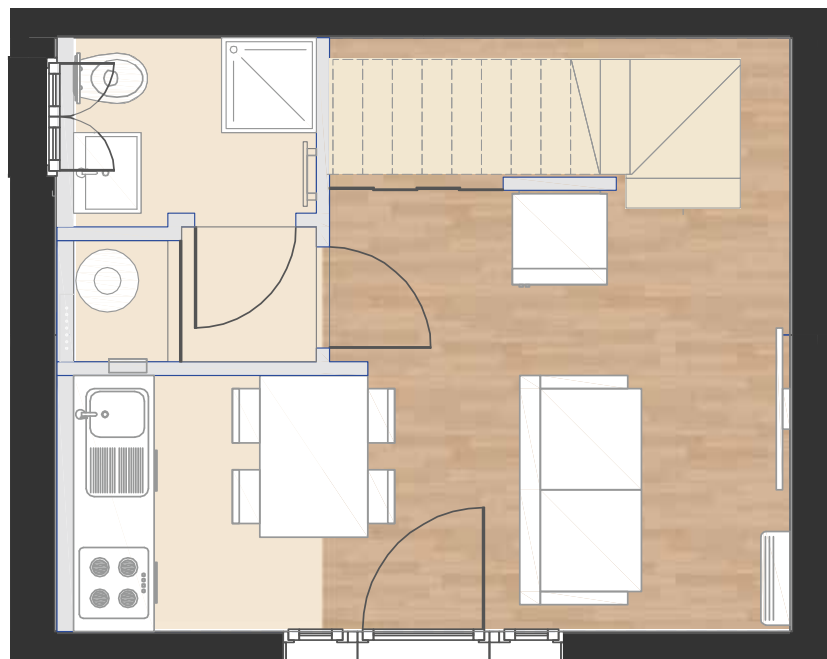
This is the basic model that can be used for numerous purposes. Mainly used by tour operators to build resorts and glamping, CABIN fits very well as a second house too where you will spend amazing days out of the city.

**GROUND FLOOR**

1 bathroom  
1 kitchen  
1 living

**FIRST FLOOR**

1 bedroom



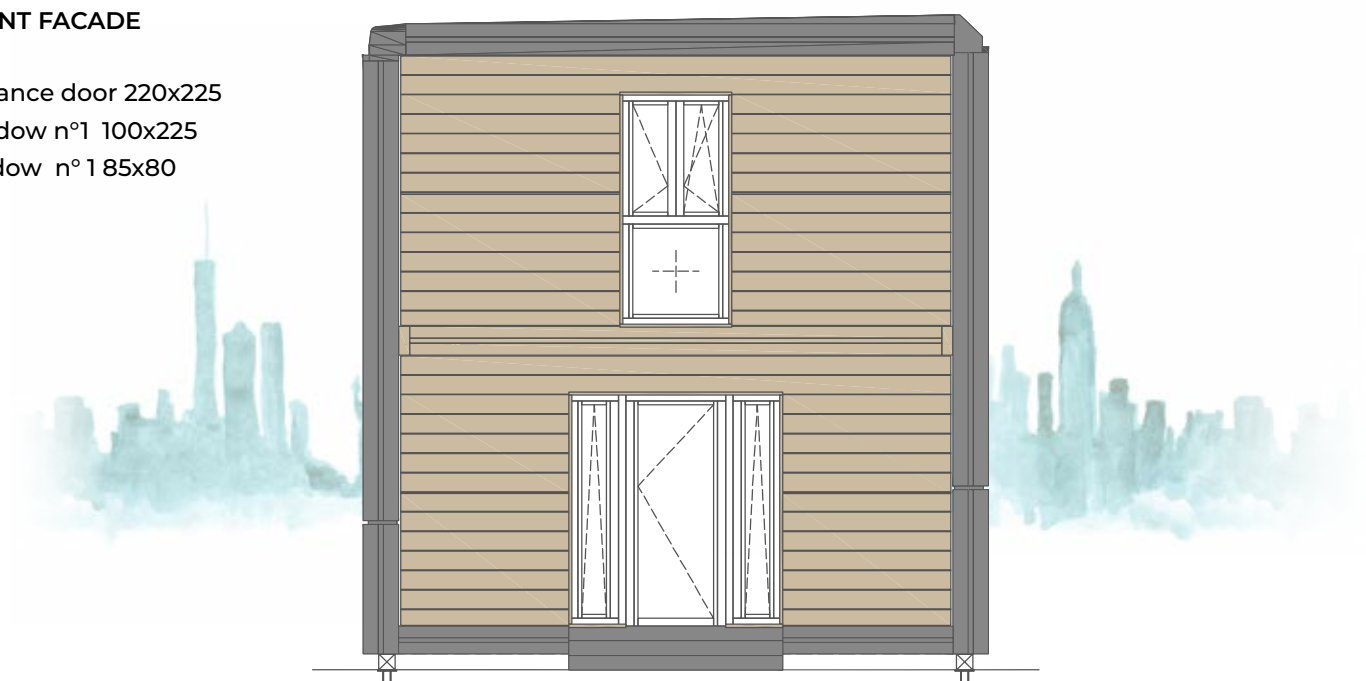
CABIN 42 MQ

**MODEL C**

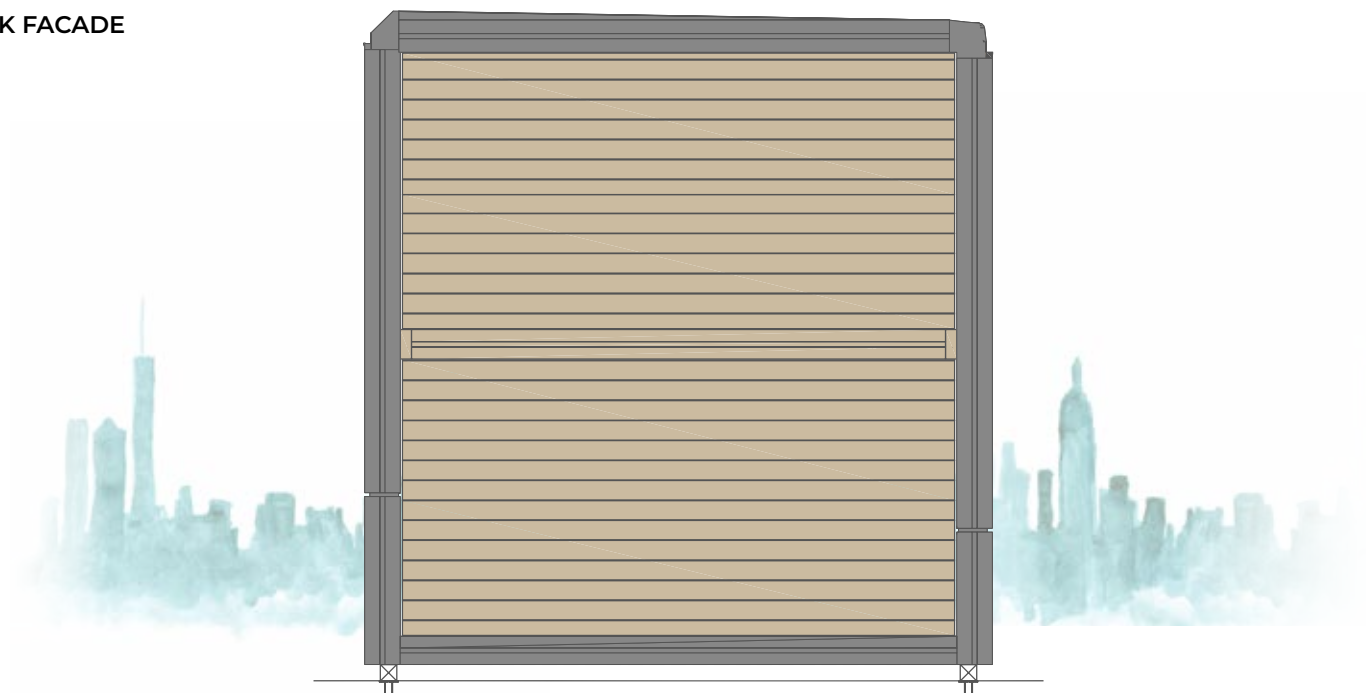
**CABIN**

**FRONT FACADE**

Entrance door 220x225  
Window n°1 100x225  
window n° 1 85x80



**BACK FACADE**



**MODEL C**

**CABIN BALCONY**

**CABIN FLOOR AREA MQ 42,30**  
**GROSS AREA MQ 59,37**

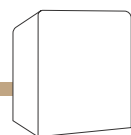
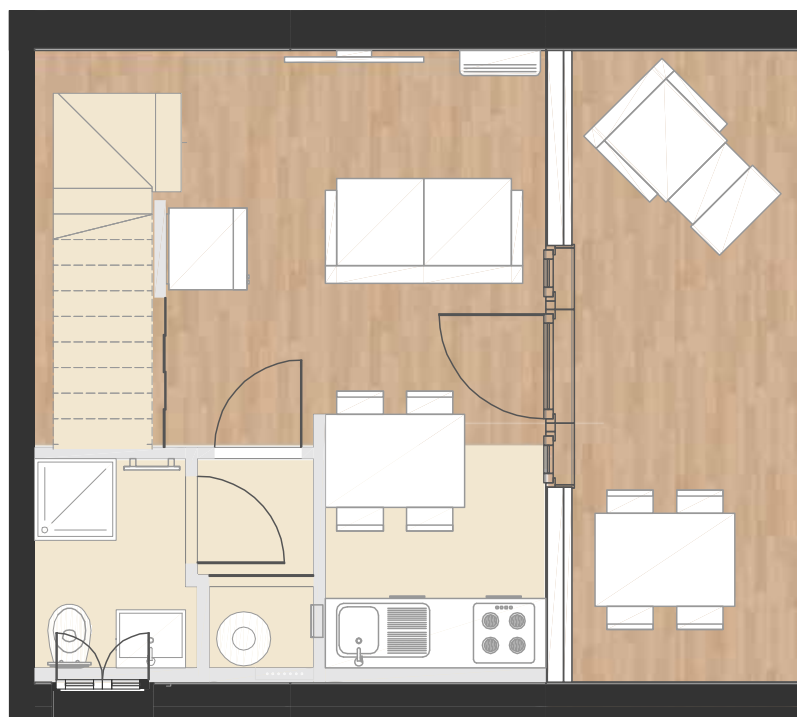
This is the basic model that can be used for numerous purposes. Mainly used by tour operators to build resorts and glamping, CABIN fits very well as a second house too where you will spend amazing days out of the city.

**GROUND FLOOR**

- 1 bathroom
- 1 kitchen
- 1 living
- 1 balcony

**FIRST FLOOR**

- 1 bedroom
- 1 balcony



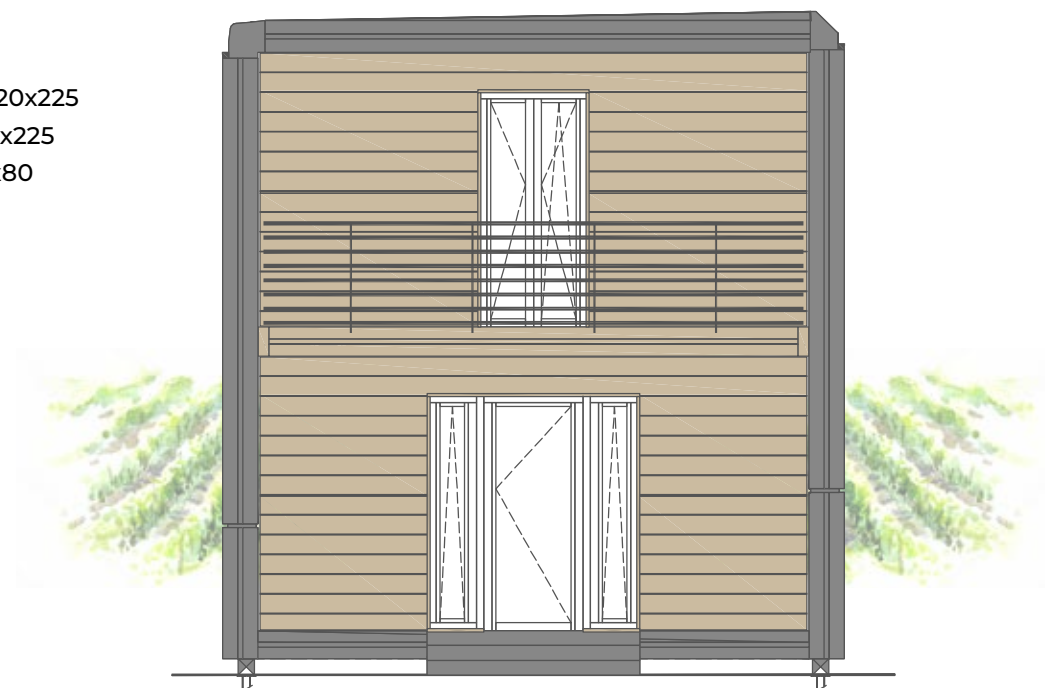
CABIN 42 MQ

**MODEL C**

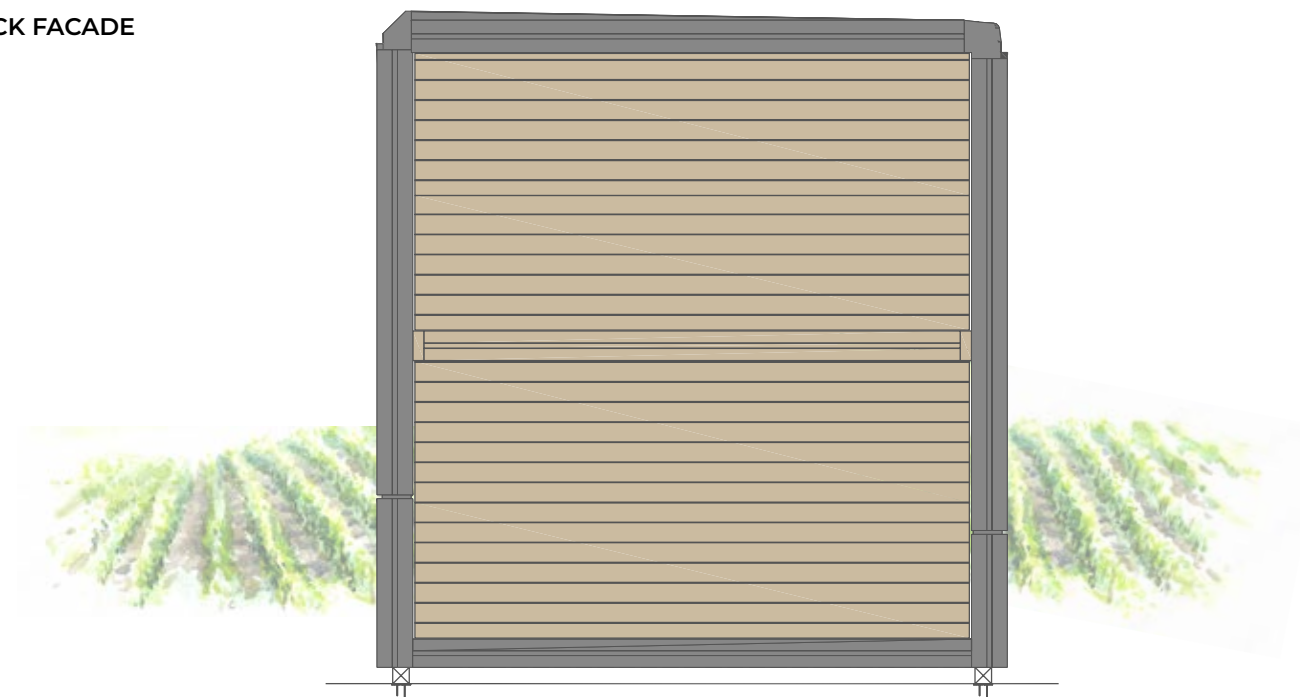
**CABIN BALCONY**

**FRONT FACADE**

Entrance door 220x225  
Window n°1 100x225  
window n° 1 85x80



**BACK FACADE**



MODEL C  
YOUNG

**YOUNG FLOOR AREA MQ 65,67**  
**GROSS AREA MQ 86,32**

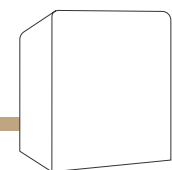
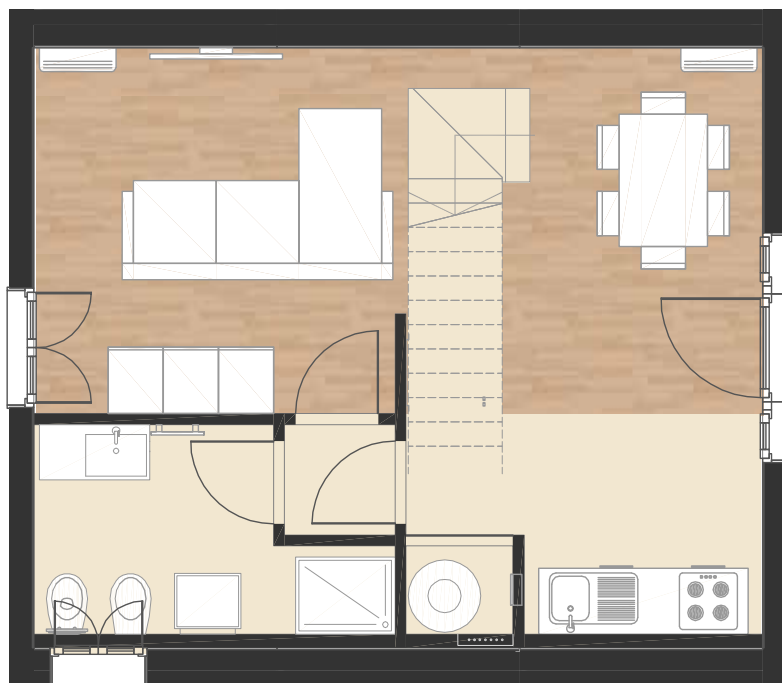
Much appreciated as a holiday home YOUNG is the way for young couples who intend to grow by taking advantage of two rooms house.

**GROUND FLOOR**

1 bathroom  
1 kitchen  
1 living

**FIRST FLOOR**

2 bedroom

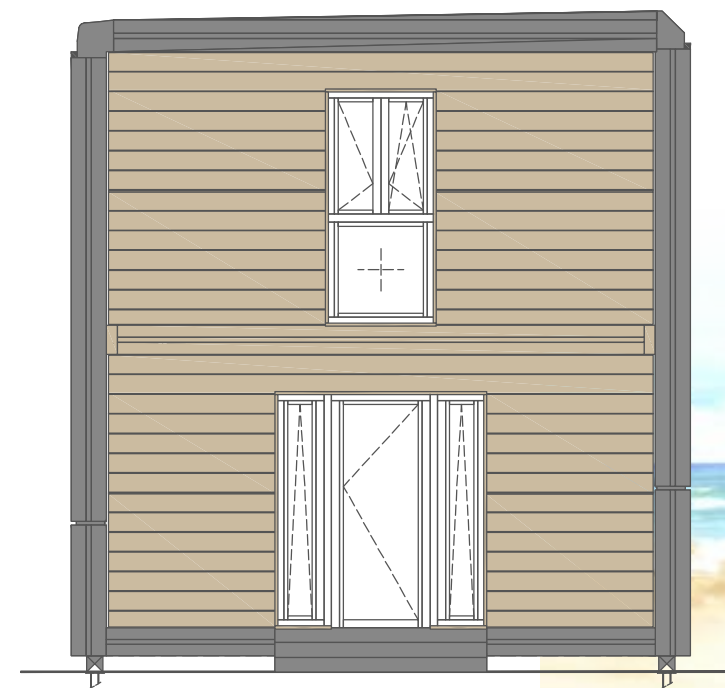


YOUNG 65 MQ

MODEL C  
YOUNG

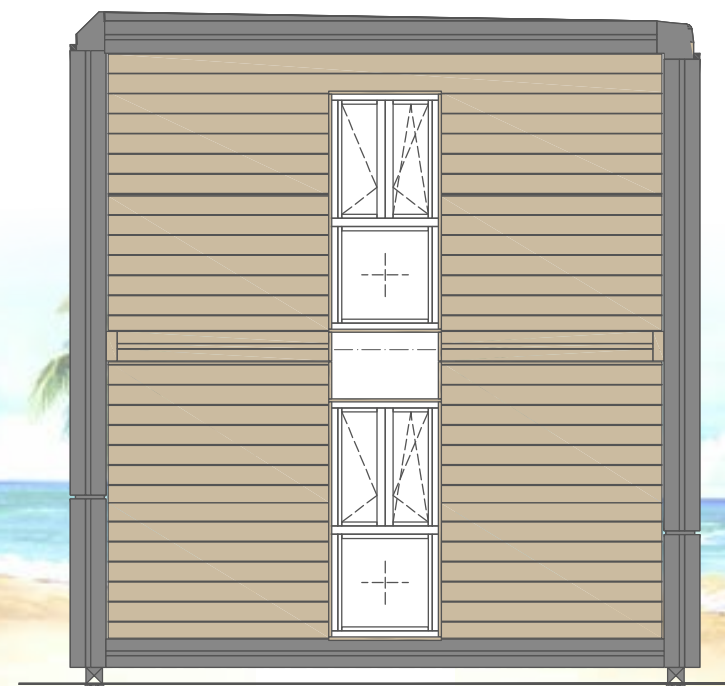
**FRONT FACADE**

Entrance door 220x225  
window 100x215



**BACK FACADE**

Windows n° 2 100x215  
Windows n° 1 85x80





MODEL C

YOUNG + BALCONY

YOUNG FLOOR AREA MQ 65,67  
GROSS AREA MQ 86,32

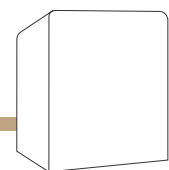
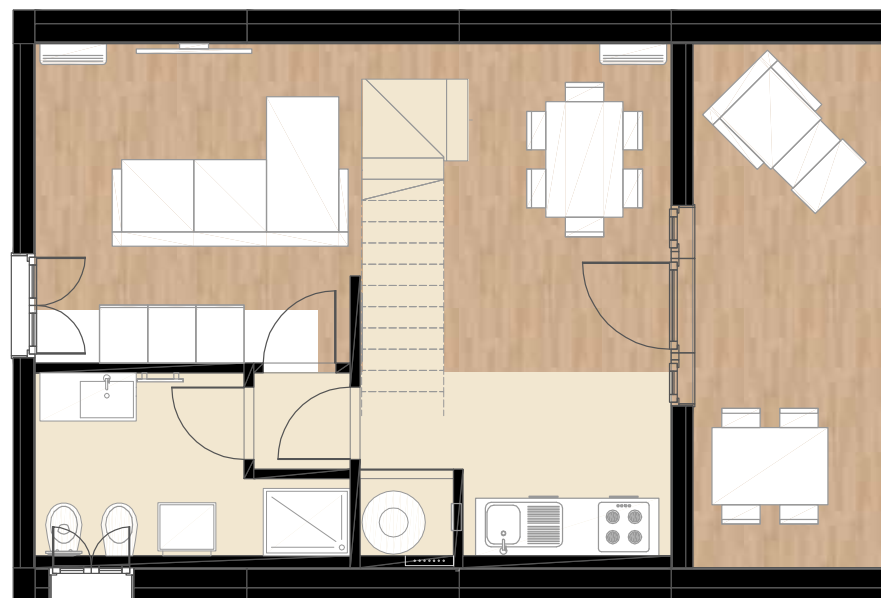
Much appreciated as a holiday home YOUNG is the way for young couples who intend to grow by taking advantage of two rooms house.

GROUND FLOOR

- 1 bathroom
- 1 kitchen
- 1 living
- 1 balcony

FIRST FLOOR

- 2 bedroom
- 1 balcony



YOUNG 65 MQ

MODEL C

YOUNG + BALCONY

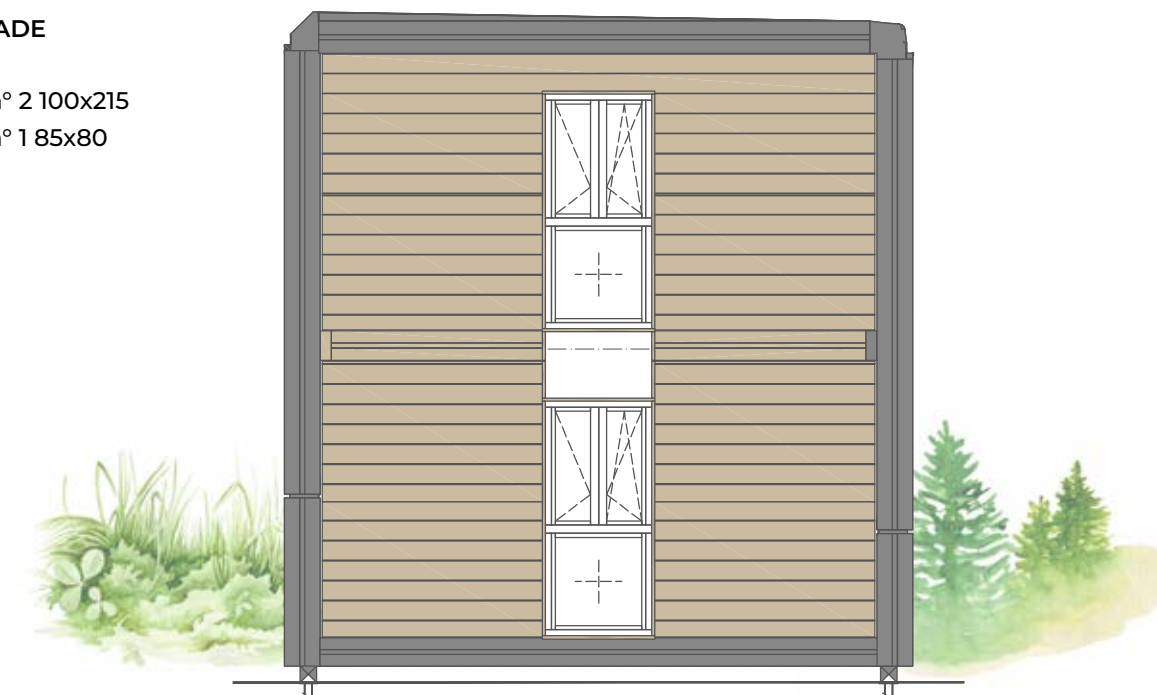
FRONT FACADE

Entrance door 220x225  
window 100x215



BACK FACADE

Windows n° 2 100x215  
Windows n° 1 85x80



MODEL C  
FAMILY

**FAMILY FLOOR AREA MQ 87,78**  
**GROSS AREA MQ 113,28**

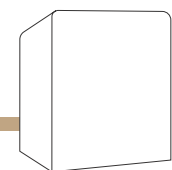
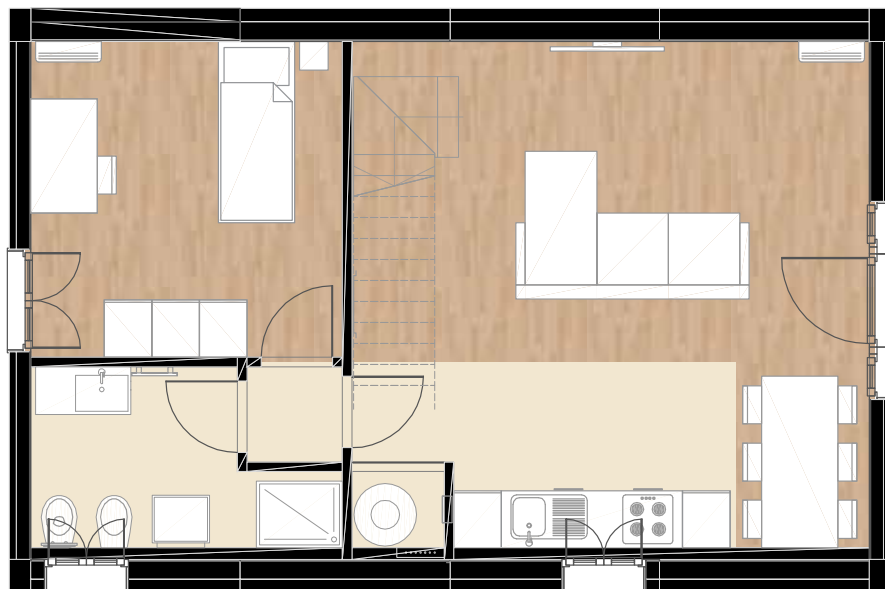
With its 3 bedrooms, this model has been named FAMILY not by chance. FAMILY provides a huge living space, 3 bedrooms and 2 bathrooms. That's what we call a smart way of living.

**GROUND FLOOR**

1 bedroom  
1 bathroom  
1 kitchen  
1 living

**FIRST FLOOR**

2 bedroom  
1 bathroom



FAMILY 87 MQ

MODEL C  
FAMILY

**FRONT FACADE**

Entrance door 220x225  
window 100x215



**BACK FACADE**

Windows n° 2 100x215  
Windows n° 3 85x80



**MODEL C**

**FAMILY+BALCONY**

**FAMILY FLOOR AREA MQ 87,78**  
**GROSS AREA MQ 113,28**

With its 3 bedrooms, this model has been named FAMILY not by chance. FAMILY provides a huge living space, 3 bedrooms and 2 bathrooms. That's what we call a smart way of living.

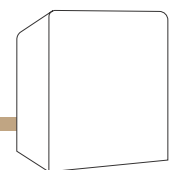
**GROUND FLOOR**

- 1 bedroom
- 1 bathroom
- 1 kitchen
- 1 living
- 1 balcony



**FIRST FLOOR**

- 2 bedroom
- 1 bathroom
- 1 balcony



**FAMILY 87 MQ**

**MODEL C**

**FAMILY + BALCONY**

**FRONT FACADE**

Entrance door 220x225  
window 100x215



**BACK FACADE**

Windows n° 2 100x215  
Windows n° 3 85x80





MODEL C

VILLA

**VILLA FLOOR AREA MQ 110,96**  
**GROSS AREA MQ 140,23**

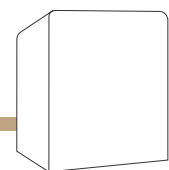
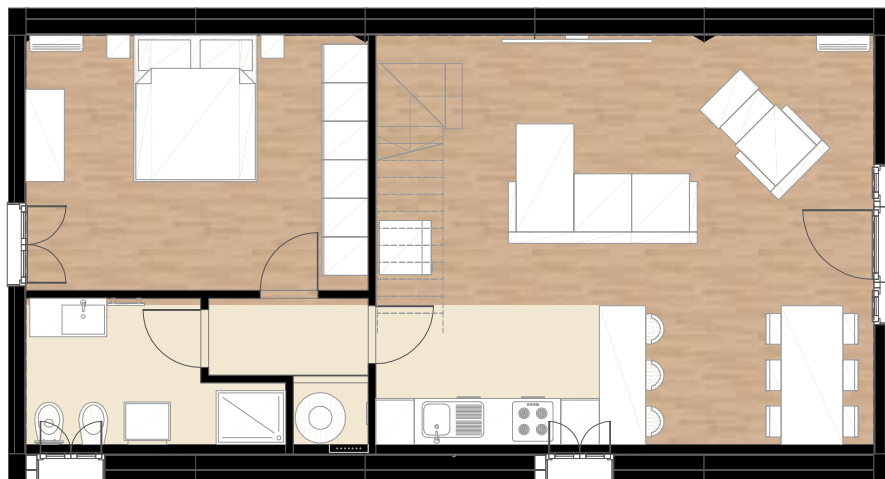
Our flagship is the largest A-FOLD houses in standard production with its 3 bedrooms and 2 bathrooms. VILLA can satisfy the needs of a large family but it could be also customized for different purposes, playing with the huge spaces you redesign VILLA according to your spirit and your dreams.

**GROUND FLOOR**

1 bedroom  
1 bathroom  
1 kitchen  
1 living

**FIRST FLOOR**

3 bedroom  
1 bathroom



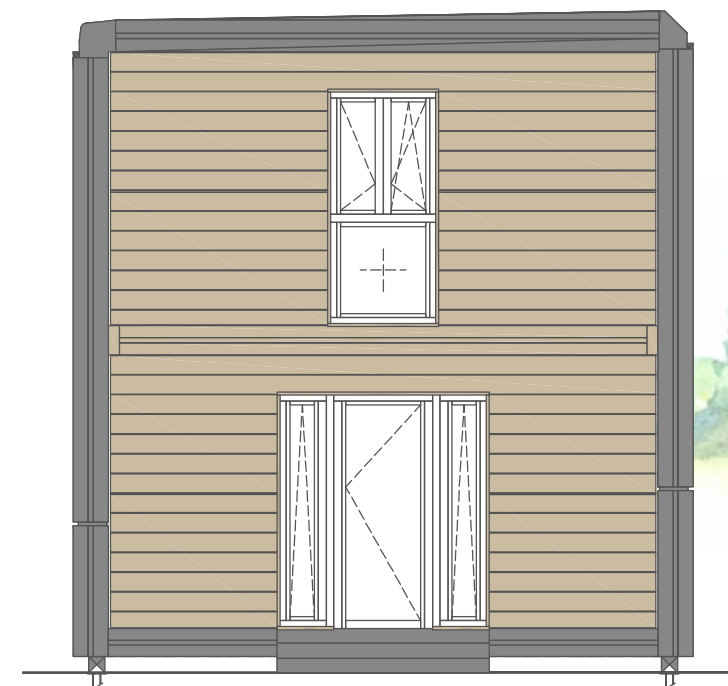
VILLA 110 MQ

MODEL C

VILLA

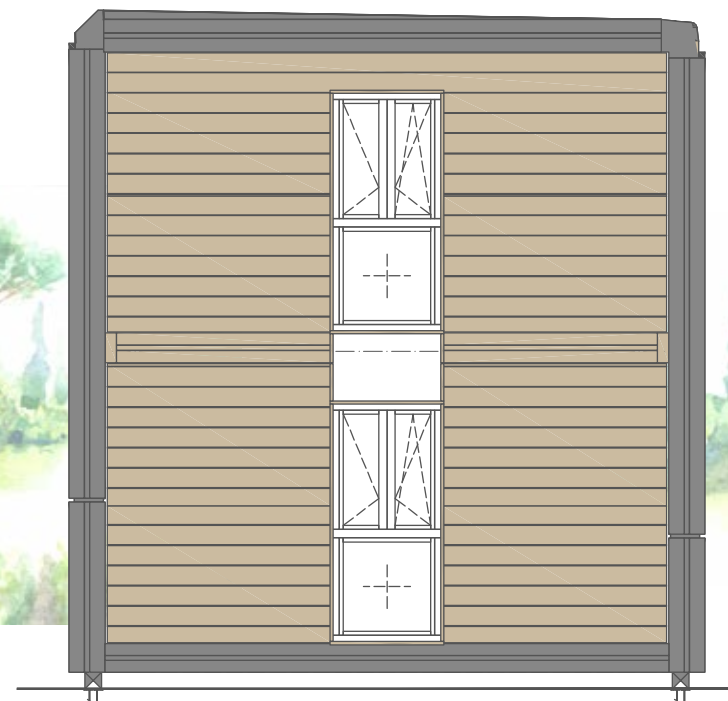
**FRONT FACADE**

Entrance door 220x225  
window 100x215



**BACK FACADE**

Windows n° 2 100x215  
Windows n° 3 85x80



**MODEL C**

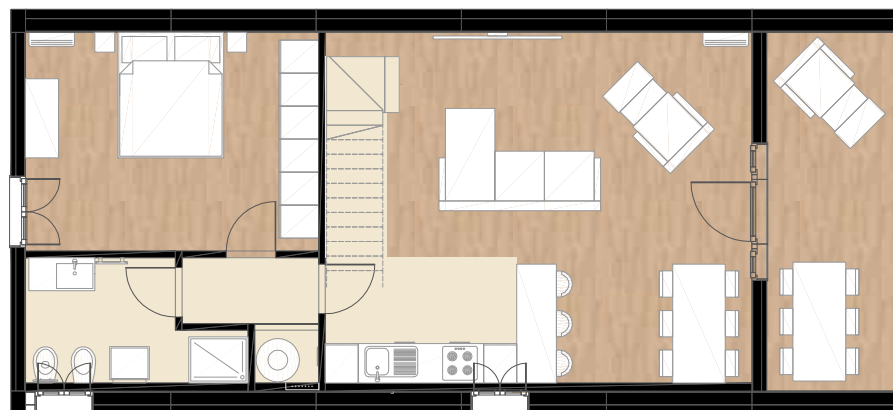
**VILLA+BALCONY**

**VILLA FLOOR AREA MQ 110,96**  
**GROSS AREA MQ 140,23**

Our flagship is the largest A-FOLD houses in standard production with its 3 bedrooms and 2 bathrooms. VILLA can satisfy the needs of a large family but it could be also customized for different purposes, playing with the huge spaces you redesign VILLA according to your spirit and your dreams.

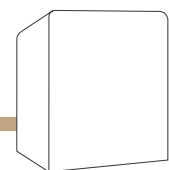
**GROUND FLOOR**

- 1 bedroom
- 1 bathroom
- 1 kitchen
- 1 living
- 1 balcony



**FIRST FLOOR**

- 3 bedroom
- 1 bathroom
- 1 balcony



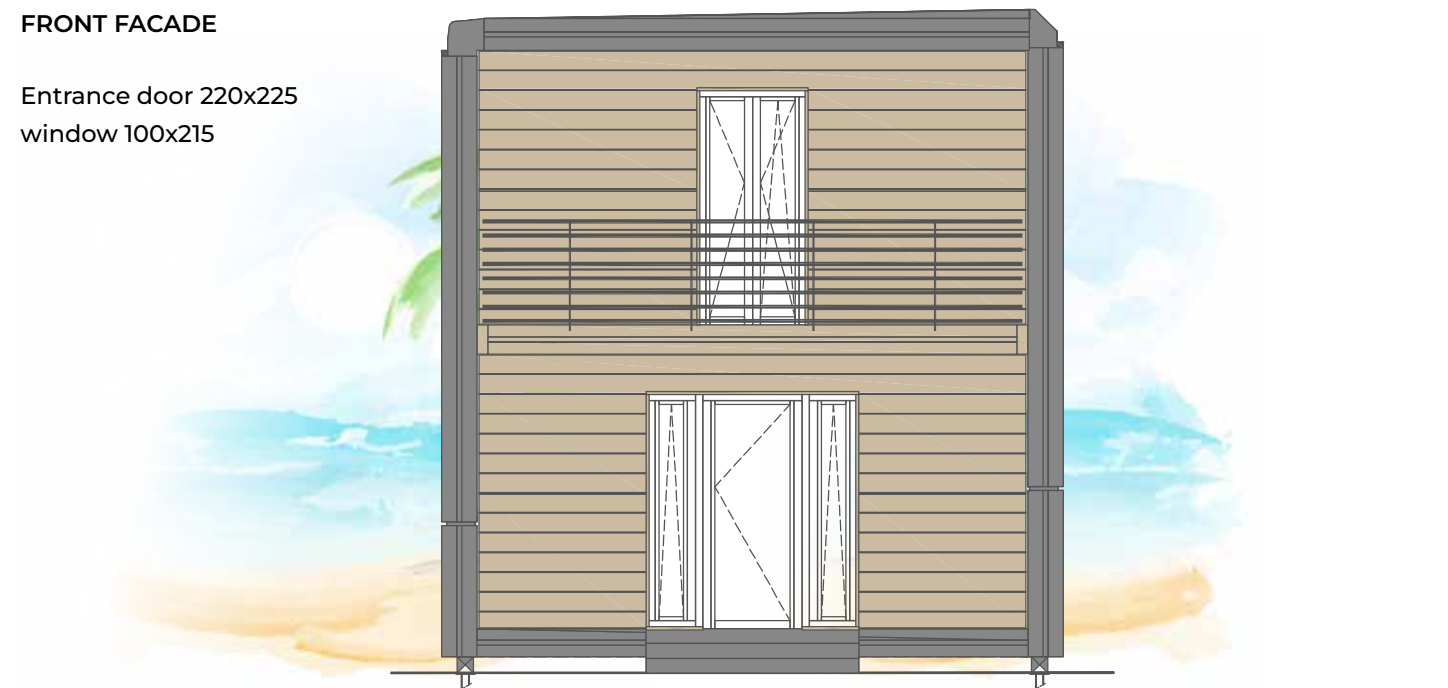
VILLA 110 MQ

**MODEL C**

**VILLA + BALCONY**

**FRONT FACADE**

Entrance door 220x225  
window 100x215



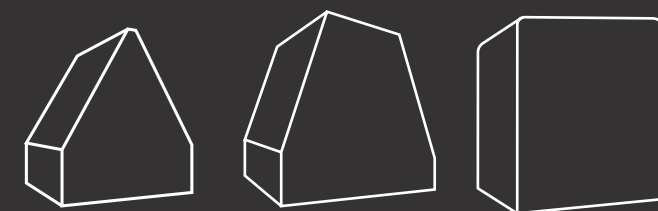
**BACK FACADE**

Windows n° 2 100x215  
Windows n° 3 85x80



# A-FOLD

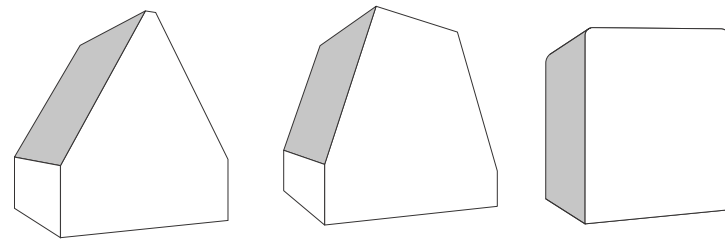
h o u s e s



**COMPONENTS**  
INCLUDED



ROOF

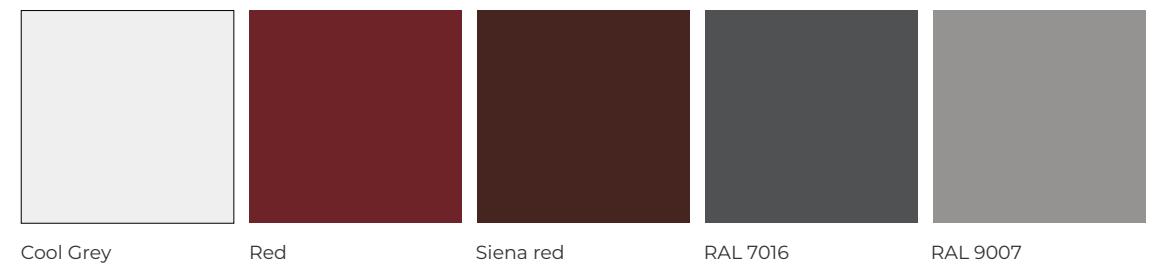


ROOF



METAL

The aluminium corrugated sheet is characterised by its light weight and very high corrosion resistance, which ensures a long lasting durability of the coating. It is possible to choose aluminium corrugated sheets in different colours and finishes, made by coil coating or surface treatments (anodising), to meet various requirements of our customers.



Cool Grey

Red

Siena red

RAL 7016

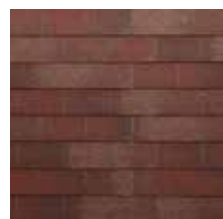
RAL 9007





## BITUMEN TILES

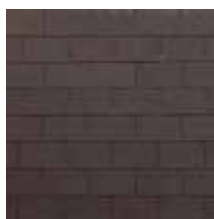
For a roof with an original design, with colors and shapes that enhance the architecture of the building and at the same time equipped with countless technical advantages, such as lightness, ease of installation, absence of maintenance, durability over time.



rosso sfumato



verde sfumato



testa di moro



grigio scuro

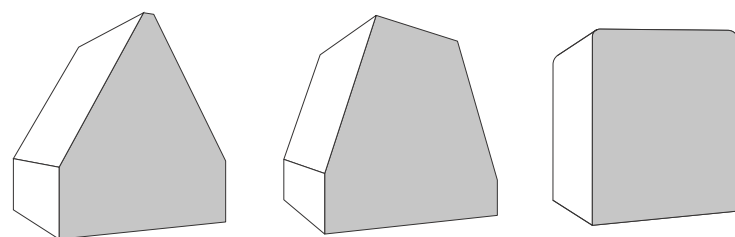


nero sfumato





FACADE



FACADE



WOOD

The spruce cladding is made with wood from the best Austrian sawmills with PEFC and CE certification. Spruce beads treated with anti-mould fungo bactericidal product of choice in an aqueous solution.

The painting cycle is foreseen with a coat of impregnating agent and a coat of exterior finish with a wax base in order to make the wood water-repellent and protect it from bad weather and UV rays. Outdoor water-based painting offers numerous advantages: reduction of emissions of solvents into the atmosphere, excellent elasticity and resistance of the paint film to temperature changes and atm.



White

Grey

Natural

Larch

Teak

Walnut

CERTIFICATIONS







## GLASS



### ADF DESIGN

82 mm

Depth of construction.

#### 6 CHAMBERS

Salamander profile with 6 insulating chambers.

#### 3 GASKETS

Profile system with 3 sealing gaskets



### ADF PREMIUM

76 mm

Depth of construction.

#### 5 CHAMBERS

Salamander profile with 5 insulating chambers.

#### 2 GASKETS

Profile system with 2 sealing gaskets

### 2 mm REINFORCEMENT

Standard reinforcement with galvanized steel on the case.

#### ANTIEFRACTION FITTINGS

Equipped with economic ventilation.

#### TRIPLE WINDOW GLASS

48 mm or 52 mm triple thermal-insulating glass, SWISSPACER Ultimate thermal spacer.

### 1,5 mm REINFORCEMENT

Reinforcement with galvanized steel of 1.5 mm (in standard) or galvanized steel on the case, 2 mm (optional).

#### ANTIEFRACTION FITTINGS

Equipped with economic ventilation.

#### DOUBLE OR TRIPLE GLASS

Double thermal-insulating glass (in standard) or triple of 24 - 32 - 40 - 48 mm.

## BRICK AND STONE

High Definition panels resistant to all kind of weather conditions. They provide thermal and acoustic insulation properties.

No mutation to heat, freeze and defrost an this is on excellent water repellent. With this kind of decorative panels you can make your dreams of having a traditional or rustic house combined with a modern touch come true.



Landrillo white



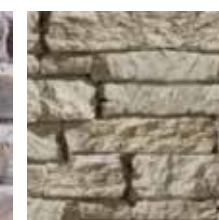
British



Old british



Urban



Sandy white



Grey

## PVC

PVC panels are produced with composite materials that do not deform, are antiseptic and are not attacked by fungus or micro organisms. Essential feature that differentiates them from wooden products to a total absence of maintenance.



Tortora



Grey



Brown



White wood

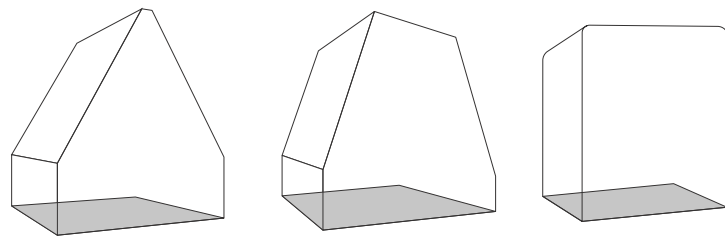


Teak



Oak

FLOOR



FLOOR



## LINOLEUM

One of the most natural and sustainable flooring solutions on the market, Tarkett linoleum has been appreciated for its natural beauty, comfort and durability for over 150 years. Following the original 1898 recipe, our linoleum is made from 94% natural raw materials (linseed oil, wood and cork flour, resins) and is available across a range of traditional marbled patterns in vivid and deep colours. It is treated with our unique xf<sup>2</sup>™ surface protection for extreme durability, easy cleaning and cost-effective maintenance. Tarkett linoleum is the world's first to be certified Cradle to Cradle® for its sustainable approach.



01

02

03

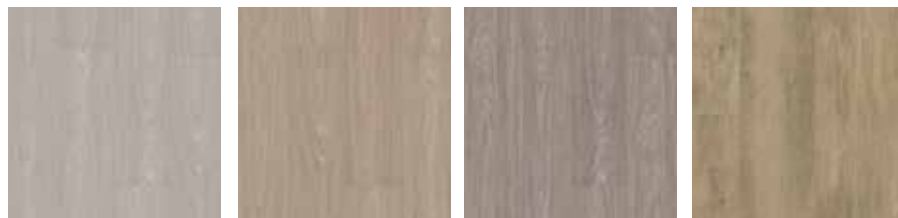
04





## STARFLOOR CLICK ULTIMATE

Floor is the new playground with luxury vinyl tiles. Produced in both tile and plank format across a range of patterns, colours and styles, they offer endless layout possibilities thanks to their modular format. Treated with our Top Clean surface protection for easy maintenance and extra resistance to scuffs, scratches and stains.



Oak Grege

Oak Natural

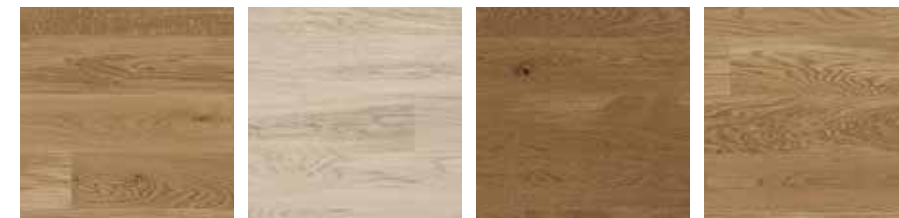
Oak Brown

Weathered Oak Natural



## PROFESSIONAL 162

Nothing compares to the emotion of natural wood. Its beauty, strength and character bring authenticity and warmth to any interior. Engineered from multiple layers of hardwood for increased stability, each floor is sealed with a lacquer or hard wax oil for improved durability and easy maintenance.



Natural oak

Whitened Oak

Cherry Oak

Country Oak





## MOQUETTE

DESSO is a leading brand with more than 85 years of experience manufacturing high performance broadloom. With a flair for design and a reputation for superior quality, our tufted and woven broadloom products embody smart design and performance and work beautifully together with other Tarkett products, to create stunning and practical concepts for every space within a building.



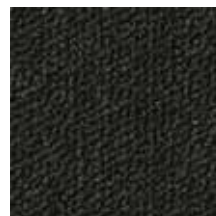
Essence 2915



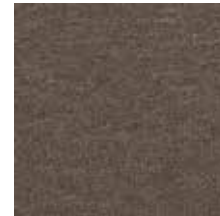
Essence 5012



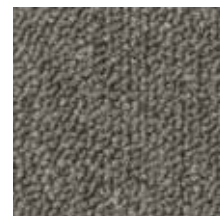
Essence 8904



Essence 9031



Essence 9096



Essence 9523



Essence 8413





## DOORS



1 White



2 Grey



3 Oak dark



4 Oak white



5 Oak natural



6 Oak red

## FEATURES

The real challenge is to combine the mastery of craftsmanship with the technology of industrial innovation. The Isomax company has won this challenge. From the experience of the master craftsmen, innovative products are born that make your doors a real design object. Attention to detail and customer needs make our products unique and improve living comfort. Smooth door, with perimeter frame, cellular structure in dehydrated cardboard, both sides MDF covered in laminate.





#### ADF DESIGN

**82 mm**  
Depth of construction.

#### 6 CHAMBERS

Salamander profile with 6 insulating chambers.

#### 3 GASKETS

Profile system with 3 sealing gaskets

#### 2 mm REINFORCEMENT

Standard reinforcement with galvanized steel on the case.

#### ANTIEFRACTION FITTINGS

Equipped with economic ventilation.

#### TRIPLE WINDOW GLASS

48 mm or 52 mm triple thermal-insulating glass, SWISSPACER Ultimate thermal spacer.



#### ADF PREMIUM

**76 mm**  
Depth of construction.

#### 5 CHAMBERS

Salamander profile with 5 insulating chambers.

#### 2 GASKETS

Profile system with 2 sealing gaskets

#### 1,5 mm REINFORCEMENT

Reinforcement with galvanized steel of 1.5 mm (in standard) or galvanized steel on the case, 2 mm (optional).

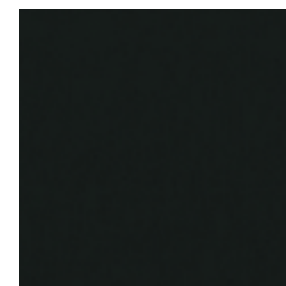
#### ANTIEFRACTION FITTINGS

Equipped with economic ventilation.

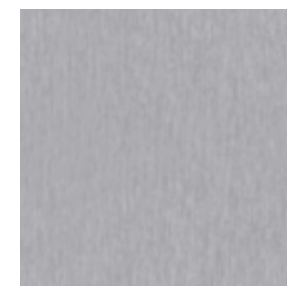
#### DOUBLE OR TRIPLE GLASS

Double thermal-insulating glass (in standard) or triple of 24 - 32 - 40 - 48 mm.

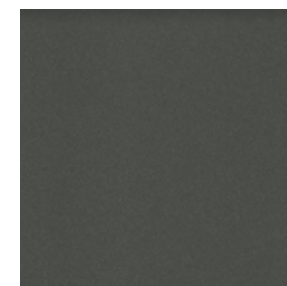
## FINISHES



Anthrazitgrau 70



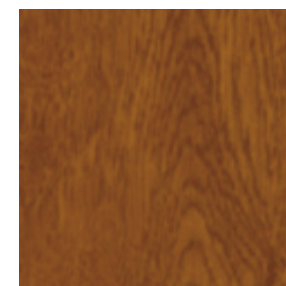
Metbrush Alu 69  
Premium



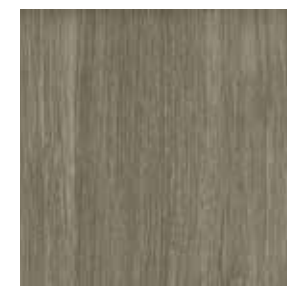
Alux DB 703 37  
Premium



Alt Weiss 39



Golden-Oak 51

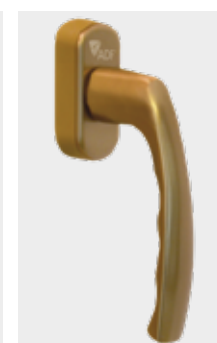


Vintage oak

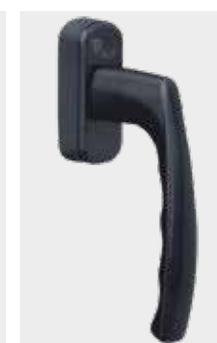
## WINDOW HANDLES



MF-H 01 White



MF-H 01 Bronze



MF-H 01 Brown



MF-H 01 Titan



## STAIRS



## ATHENA

The Athena CL open staircases are made with supporting structures and steps in flamed solid beech wood, 40 mm thick.

The railing is composed of a wooden handrail and headrail and columns in varnished steel or stainless steel, 22 mm thick. The steps, embedded in the bearing structures, ensure great stability and solidity to the product. The width of the staircase varies from 600 mm to 1000 mm. The tailor-made staircase can be installed in any location and in any type of hole in the floor. The capacity of the staircase is 400 kg/m<sup>2</sup>.

STAIRS



STILOS

Stilos modular staircases are made with modules and steel railing (2 columns per step). Standard widths: 70 cm and 83 cm. The steps, 40 mm thick, and the circular section handrail, 45 mm in diameter, are made of painted solid beech wood. The staircase is adjustable during installation and is suitable for any type of hole. The staircase has a very simple adjustment system for the riser (A) and tread (P), which allows the dimensions of the product to be easily adapted to the size of the room.

STAIRS

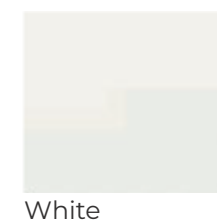
COLORS OF  
WOOD BEECH



COLORS OF  
METAL



COLORE GRADINI





BATH

WC FLUX48

BIDET FLUX48



- Dimensions 370x480x410 mm
- Weight 29 kg
- Water inlet 1/2
- Discharge pipe 32 or 40 mm
- Motor power 600 w
- Supply voltage 220-240 v / 50 hz
- Noise level < 60db
- Max distance 100 m
- Maximum head 7 m



- Dimensions 370x480x410 mm
- Weight 20 kg



EASY DOM

WATER HEATING



HEAT PUMP WATER HEATER

Wall-mounted monoblock model. The Plug&Play solution for maximum energy savings is ideal for those who have limited space. Compact and easy to install, it offers great performance and reliability. It also ensures energy efficiency and savings by using heat from the air, a natural and inexhaustible source of energy.

- Maximum efficiency in heating water
- Silent function (low noise)
- Wall-mounted and space-saving installation
- Optimized for indoor and outdoor applications
- Exclusive Italian design



OPTIONAL - SOLAR SYSTEM

This System is composed of a photovoltaic panels, an accumulation storage and a control system. The photovoltaic system is composed of panels installed on the roof, thanks to the chemical and physical characteristics of the silicon, they capture the sun's energy and transform it into electricity. Use the best panels on the market that can maximize performance even in the presence of cloudy skies and north exposure. The direct current (DC) generated by the photovoltaic panels is converted, with the use of an inverter, the storage system stores the surplus of installed electricity during the day. The control system monitors 24 hours a day the amount of energy supplied by the system and by detecting the consumption of the house, it indicates the amount of energy necessary to guarantee 100% autonomy.



## HEATING/COOLING SYSTEM



This system is uniquely quiet and energy efficient, perfectly optimized air purification for minor applications.

The Console model is only 199 mm thick, it has been designed to avoid accumulations of dust, made from the inside. The touch screen display allows monitoring and switching on the indoor unit.

The Console model combines high performance with maximum respect for the environment in which you live. The air speed can be adjusted in three different modes ensuring maximum comfort at all times.

Modello		AKT26	AKT35	AKT52
Cooling capacity	KW	2,8	3,52	5,2
Heating capacity	KW	3	3,8	5,1
Absorption	W	20	25	70
Rated Current	A	0,1	0,1	-
Air flow rate	m / min	9,2	10	11,66
Sound pressure level (min-max)	dB(A)	28 - 39	33 - 40	35 - 44
Dimensions (WxHxD)	mm	700x630x220	700x630x220	700x630x220
Net Weight	kg	15	15	15
Liquid piping diameter	mm	6,35 (1/4)	6,35 (1/4)	6,35 (1/4)
Gas pipe diameter	mm	9,52 (3/8)	9,52 (3/8)	12,7 (1/2)

## VMC - OPTIONAL



Decentralized air extraction and intake unit with very high efficiency heat recovery with thermal efficiency up to 90%. It is based on the so-called "push pull" operating principle, ie an alternating flow with a 60second flow inversion cycle. It is equipped with a ceramic accumulator type heat exchanger which stores the heat of the extracted air in the extraction cycle (pull) and then transfers it to the air introduced during the injection cycle (push).

Compliant with EN 60335-2-80 , B.T. 2014/35 2014/30 / UE, EMC 2014 / UE.

## SMART HOME

### BASIC Lights automation

- O2IP Station MG Wireless, dual LAN and USB port
- Removable Battery-less Wireless control stations
- Outlet 10-20 A
- Led lightning strip 12-24 volt 3300/5300 Kelvin
- Wi-Fi light management switch
- Wireless Harvesting Receiver Dongle

### COMFORT Basic automation: A/C, lights and power (Optional)

- O2IP Station MG Wireless, dual port LAN e USB
- User activation relay
- Single-phase energy meters
- Removable Battery-less Wireless control stations
- Outlet 220 V 10-20 A
- Led lighting strip 12-24 volt 3300/5300 Kelvin
- Wi-Fi switch for lighting management
- Temperature sensor
- Wireless Harvesting Receiver Dongle
- Wi-Firelay device T3R Wi-Fiinterface
- APP Mobile

### VIP automation slot: A/C, lights, power, audio, automation windows and air quality (Optional)

- Light panel dimmerable smart multimedia gateway
- User activation relay
- Single phase energy meters
- Removable battery-less wireless control stations
- Outlet 10-20 A
- Led lighting strip 12-24 volt 3300/5300 Kelvin
- Wi-Fi switch for lighting management
- Wireless Harvesting Receiver Dongle
- Wi-Fi relay device T3R Wi-Fi interface
- Temperature sensor
- Wireless magnetic sensor for window control
- Smoke sensor
- Air quality sensor Co2-PM
- Video door entry system
- APP Mobile

## SOLAR PLUS SYSTEM OPTIONAL

This System is composed of a photovoltaic panels, an accumulation storage and a control system. The photovoltaic system is composed of panels installed on the roof, thanks to the chemical and physical characteristics of the silicon, they capture the sun's energy and transform it into electricity. Use the best panels on the market that can maximize performance even in the presence of cloudy skies and north exposure. The direct current (DC) generated by the photovoltaic panels is converted, with the use of an inverter, the storage system stores the surplus of installed electricity during the day. The control system monitors 24 hours a day the amount of energy supplied by the system and by detecting the consumption of the house, it indicates the amount of energy necessary to guarantee 100% autonomy.



## SCREW FOUNDATION OPTIONAL

The screw piles system foundation consisting of metal poles to which spiral sectors are applied in order to obtain an element which, suitably driven into the ground, is able to provide a support point with predetermined characteristics of tensile and compressive strength. Screw posts in galvanized steel with cylindrical shape, in some cases with a final taper, which is inserted into the ground by screwing. The helical section along the body of the pile provides anchorage and facilitates insertion into the ground. The upper head of the pole, which remains outside the ground, consists of a steel plate on which the fixing elements suitable for connecting the pole with the structures to be supported are welded. The poles are introduced into the ground through a standard hydraulic drilling machine and, once fixed, they can support various types of structures intended to be used by the user. The type and size of the foundation pile are selected by the technical service according to the type of soil in which the foundation is to be built. The material used, always accompanied by certification, is carbon in quality S275JR and S355JR. The poles are supplied with a hot-dip galvanizing treatment and a very thick layer which guarantees corrosion protection and durability.





**A-FOLD EXPERTS: PROFESSIONALS, QUALIFIED IN PREFABRICATED WOODEN HOUSES, FROM ALL OVER THE WORLD**

A-FOLD Experts form a dense network of professionals in the field of prefabricated modular wooden houses in different foreign countries. They are offering high quality service to national and international customers.

**A-FOLD PARTNERS: A DENSE NETWORK OF DISTRIBUTORS ALL OVER THE WORLD**

The A-FOLD Partners network includes the best distributors in the market of prefabricated wooden houses. We have established a constant and long-lasting relationship with selected partners in the wood prefabrication sector, which over time has enabled us at A-FOLD to consolidate our expertise.

**ITALY**  
**Nico D'Incecco – Commercial Director**

Modular Homes - Headquarters  
Via Piano di Sacco, 65  
Città sant'Angelo (PE)  
Italy  
E-mail: nico.dincecco@a-fold.com  
Tel: +39 3476124434

**CATALUNYA**  
**Guillermo Granero – A-FOLD Expert**

**Contacts**  
Maslow Homes  
E-mail: guillermo.granero@a-fold.com  
Tel: +34 653878444

**ICELAND**  
**Indridi Gunnlaugsson – A-FOLD Expert**

**Contacts**  
E-mail: indridi.gunnlaugsson@a-fold.com  
Tel: +003 54 617 3184

**NORWAY**  
**Indridi Gunnlaugsson – A-FOLD Expert**

**Contacts**  
E-mail: indridi.gunnlaugsson@a-fold.com  
Tel: +003 54 617 3184

**PORTUGAL**  
**João Santarém – A-FOLD Expert**

**Contacts**  
Rubrica – Sociedade de Publicidade, Imagem & Engenharia, Lda  
Rua da Indústria, 22 Cave B  
6200-114 Covilhã  
Portugal  
E-mail: Joao.santarem@a-fold.com  
Tel: +351 275 181 767

**SWEDEN**  
**Indridi Gunnlaugsson – A-FOLD Expert**

**Contacts**  
E-mail: indridi.gunnlaugsson@a-fold.com  
Tel: +003 54 617 3184

**VALENCIAN COMMUNITY**  
**Guillermo Granero – A-FOLD Expert**

**Contacts**  
Maslow Homes  
E-mail: guillermo.granero@a-fold.com  
Tel: +34 653878444

**ITALY**  
**Nico D'Incecco – Commercial Director**

Modular Homes - Headquarters  
Via Piano di Sacco, 65  
Città sant'Angelo (PE)  
Italy  
E-mail: nico.dincecco@a-fold.com  
Tel: +39 3476124434

**ANDORRA**  
**Guillermo Granero – A-FOLD Partner**

**Contacts**  
E-mail: guillermo.granero@a-fold.com  
Tel: +34 653878444

**CZECH REPUBLIC**  
**Tomas Volf – A-FOLD Partner**

**Contacts**  
Rohanské nábřeží 670/19-186 00 Praha 8 Karlín  
E-mail: tomas.volf@a-fold.com  
Tel: +420 777 320 184

**DOMINICAN REPUBLIC**  
**Alma System – A-FOLD Partner**

**Contacts**  
Avenida Cerro de San Pedrio, 4  
Chalet 23 - S.S. De Ior Reyes  
28708 Madrid  
Spain  
E-mail: svetlana.maslova@a-fold.com  
Tel: +34 629137920

**HUNGARY**  
**Miklós Berczi – A-FOLD Partner**

**Contacts**  
Real House Kft. 2000 Szentendre  
Dózsa György út 47  
E-mail: miklos.berczi@a-fold.com  
Tel: +36 30 940 2059

**Rómeó Fitos – A-FOLD Partner**

**Contacts**  
Real House Kft. 2000 Szentendre  
Dózsa György út 47  
E-mail: romeo.fitos@a-fold.com  
Tel: +36 30 940 2059

**ISRAEL**  
**Naftali Erlanger – A-FOLD Partner**

**Contacts**  
Revolustone Ltd  
16 Ramban Street, Gerusalemme  
Israel  
E-mail: naftali.erlanger@a-fold.com

**MALAYSIA**  
**Ar. Wan Yan Teh – A-FOLD Partner**

**Contacts**  
Level 15 uniti 15-1 - 2°, Q SENTRAL  
Jalan Stesen Sentral 2  
50470 – Kuala Lumpur  
Wilayah Persekutuan  
Kuala Lumpur  
E-mail: Wy.teh@a-fold.com

**NETHERLANDS**  
**Alex Van Den Heuvel – A-FOLD Partner**

**Contacts**  
Scharrewiel 3-8  
8502VB Joure  
Netherlands  
E-mail: alex.vandenheuvel@a-fold.com  
Tel: +31(0)6 19 70 14 66

**Kees Bosma – A-FOLD Partner**

**Contacts**  
Scharrewiel 3-8  
8502VB Joure Netherlands  
E-mail: kees.bosma@a-fold.com  
Tel: +31(0)6 19 70 14 66

**PANAMA**  
**Samantha Ortega – A-FOLD Partner**

**Contacts**  
E&B GLOBAL SA, Peninsula Center 901, Costa del Este, Ciudad de Panama  
Tel: +507-3873322

**POLAND**  
**ASPECT Polska Sp. z oo – A-FOLD Partner**

**Contacts**  
ulica Zagórze, 52 33335  
Nawojowa  
Rzeczpospolita Polska  
E-mail: k.kmak@aspect.com.ua  
Tel: +48 505 99-89-83

**SLOVAKIA**  
**Tomas Volf – A-FOLD Partner**

**Contacts**  
Rohanské nábřeží 670/19-186 00 Praha 8 Karlín  
E-mail: tomas.volf@a-fold.com  
Tel: +420 777 320 184

**SPAIN**  
**Alma System – A-FOLD Partner**

**Contacts**  
Avenida Cerro de San Pedrio, 4  
Chalet 23 - S.S. De Ior Reyes  
28708 Madrid  
Spain  
E-mail: svetlana.maslova@a-fold.com  
Tel: +34 629137920

**SWITZERLAND**  
**Alma Systems GMBH – A-FOLD Partner**

**Contacts**  
Zugerstrasse 19  
6318 Walchwil (Zug)  
Switzerland  
E-mail: svetlana.maslova@a-fold.com  
Tel: +34 629137920

**UKRAINE**  
**Група компаній АСПЕКТ – A-FOLD Partner**

**Contacts**  
вул. Зелена, 253 б пов 3.  
79035 Львів  
Україна  
E-mail: office@aspect.com.ua  
Tel: +38 068 499-98-99

**Представник в Києве – A-FOLD Partner**

**Contacts**  
вул. Зелена, 253 б пов 3.  
79035 Львів  
Україна  
E-mail: aspekt-lviv@ukr.net  
Tel: +38 044 465 77 49



A-FOLD HOUSES ® 2022. Allright reserved.

MODULAR HOMES SRL  
VIA LUNGOFINO, 149  
65013 CITTA' SANT'ANGELO (PE)  
[www.a-fold.com](http://www.a-fold.com)